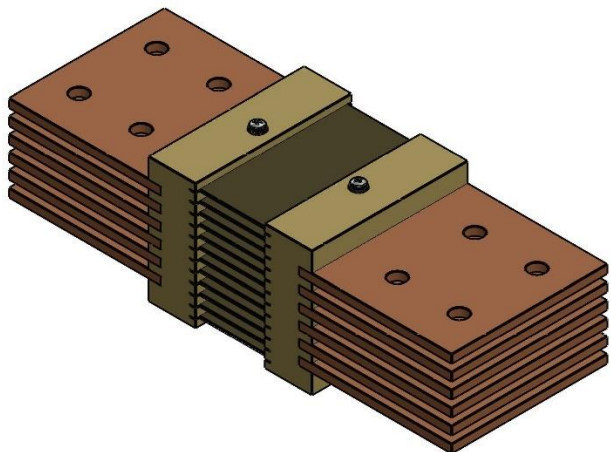


Dimensions in Inches, Tolerances: ±.015 for hole diameters.  
 Other tolerances ±.030 unless otherwise noted.  
 Dimensions are subject to change without notice.

## DC AMMETER SHUNT SERIES 205

### FEATURES

- Measuring range: 2500A to 10,000A
- Output range: 50mV and 100mV
- Composed of manganin and either brass (for shunts rated below 10,000A) or copper (for shunts rated 10,000A and higher)
- Constant current distribution to shunt strips
- Terminal blocks are slotted to receive one-quarter (1/4) inch bar per slot
- STD Accuracy ±0.25% (0.1% available upon request.)



### RECOMMENDATIONS

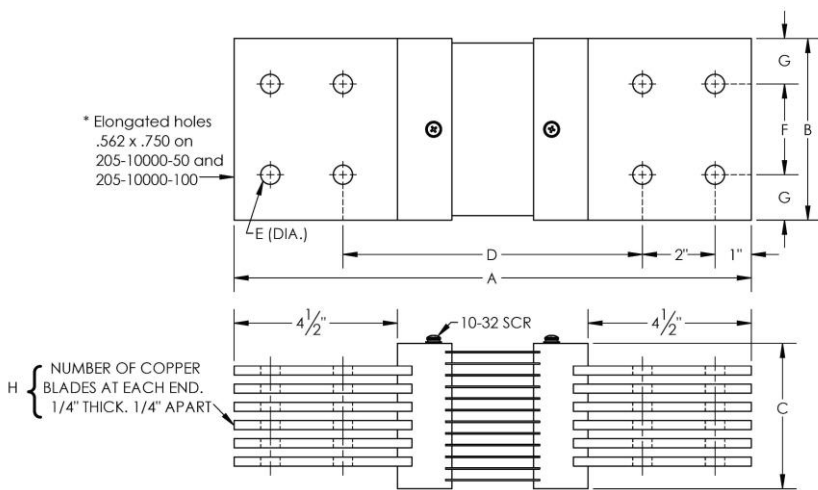
- Shunts should be mounted on the grounded side of the circuit (or mounted on the grounded side of circuits above 750 volts for panel mounted shunts with insulated bases.)
- Shunts should run for no more than two-thirds (2/3) the rated current under normal conditions as per AIEEE standards.
- The manganin shunt strip must not exceed 145°C, as this will cause permanent change in resistance.
- If longer lead lengths are necessary, the additional IR (millivolt) drop in the leads must be taken into consideration when ordering instruments.
- Shunts may be connected (without error) in parallel to measure heavy currents providing each shunt has a separate pair of millivolt leads connected to the instrument terminals.
- The resistance blades of the shunt should be mounted in a vertical position with the longitudinal axis of the shunt in a horizontal position in order to promote the free convectational flow of air.

#### 50 mV

Catalog Number	AMP	A	B	C	D	E	F	G	H
205-2500-50	2500	12 5/8	4	1 1/2	6 5/8	7/16	2	1	2
205-3000-50	3000	12 5/8	4	2	6 5/8	7/16	2	1	3
205-4000-50	4000	12 5/8	4	3	6 5/8	7/16	2	1	4
205-4500-50	4500	12 5/8	4	3	6 5/8	7/16	2	1	4
205-5000-50	5000	12 5/8	4	3	6 5/8	7/16	2	1	4
205-6000-50	6000	12 5/8	4	4	6 5/8	9/16	2	1	5
205-7000-50	7000	12 5/8	5	4	6 5/8	9/16	2 1/2	1 1/4	5
205-7500-50	7500	12 5/8	5	4	6 5/8	9/16	2 1/2	1 1/4	6
205-8000-50	8000	12 5/8	5	4	6 5/8	9/16	2 1/2	1 1/4	6
205-9000-50	9000	12 5/8	5	4	6 5/8	9/16	2 1/2	1 1/4	6
205-10000-50	10000	12 5/8	5	5	6 5/8	*	2 1/2	1 1/4	7

#### 100 mV

Catalog Number	AMP	A	B	C	D	E	F	G	H
205-2500-100	2500	14 1/4	4	1 1/2	8 1/4	7/16	2	1	2
205-3000-100	3000	14 1/4	4	2	8 1/4	7/16	2	1	3
205-4000-100	4000	14 1/4	4	3	8 1/4	7/16	2	1	4
205-4500-100	4500	14 1/4	4	3	8 1/4	7/16	2	1	4
205-5000-100	5000	14 1/4	4	3	8 1/4	7/16	2	1	4
205-6000-100	6000	14 1/4	4	4	8 1/4	9/16	2	1	5
205-7000-100	7000	14 1/4	5	4	8 1/4	9/16	2 1/2	1 1/4	5
205-7500-100	7500	14 1/4	5	4	8 1/4	9/16	2 1/2	1 1/4	6
205-8000-100	8000	14 1/4	5	4	8 1/4	9/16	2 1/2	1 1/4	6
205-9000-100	9000	14 1/4	5	4	8 1/4	9/16	2 1/2	1 1/4	6
205-10000-100	10000	14 1/4	5	5	8 1/4	*	2 1/2	1 1/4	7



**AAC**

**205 SERIES**

Rev.  
A