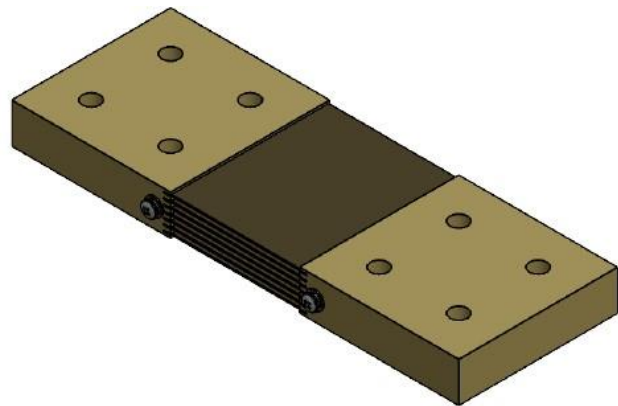


Dimensions in Inches, Tolerances: ± 0.15 for hole diameters.
 Other tolerances ± 0.30 unless otherwise noted.
 Dimensions are subject to change without notice.

DC AMMETER SHUNT SERIES 204

FEATURES

- Measuring range: 1500A to 2000A
- Output range: 50mV and 100mV
- Composed of manganin and either brass (for shunts rated below 10,000A) or copper (for shunts rated 10,000A and higher)
- Constant current distribution to shunt strips
- Terminal blocks are slotted to receive one-quarter (1/4) inch bar per slot
- STD Accuracy $\pm 0.25\%$ (0.1% available upon request.)

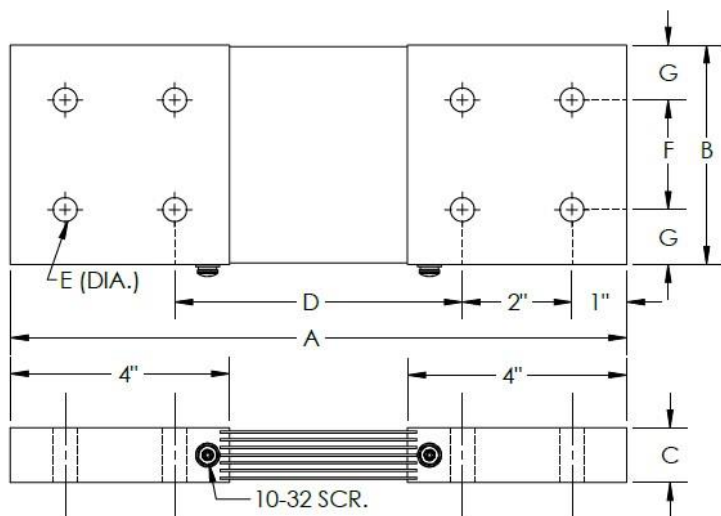


RECOMMENDATIONS

- Shunts should be mounted on the grounded side of the circuit (or mounted on the grounded side of circuits above 750 volts for panel mounted shunts with insulated bases.)
- Shunts should run for no more than two-thirds (2/3) the rated current under normal conditions as per AIEEE standards.
- The manganin shunt strip must not exceed 145°C, as this will cause permanent change in resistance.
- If longer lead lengths are necessary, the additional IR (millivolt) drop in the leads must be taken into consideration when ordering instruments.
- Shunts may be connected (without error) in parallel to measure heavy currents providing each shunt has a separate pair or millivolt leads connected to the instrument terminals.
- The resistance blades of the shunt should be mounted in a vertical position with the longitudinal axis of the shunt in a horizontal position in order to promote the free convectional flow of air.

50 mV

Catalog Number	AMP	A	B	C	D	E	F	G
204-1500-50	1500	9 5/8	3	1	3 5/8	7/16	2	1/2
204-2000-50	2000	9 5/8	4	1	3 5/8	7/16	2	1



100 mV

Catalog Number	AMP	A	B	C	D	E	F	G
204-1500-100	1500	11 1/4	3	1	5 1/4	7/16	2	1/2
204-2000-100	2000	11 1/4	4	1	5 1/4	7/16	2	1

AAC

204 SERIES

Rev.
A