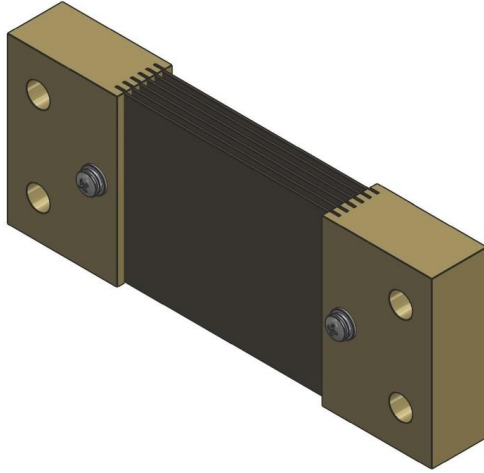


Dimensions in Inches, Tolerances: ±.015 for hole diameters.  
 Other tolerances ±.030 unless otherwise noted.  
 Dimensions are subject to change without notice.

## DC AMMETER SHUNT SERIES 202

### FEATURES

- Measuring range: 300A to 1200A
- Output range: 50mV and 100mV
- Composed of manganin and either brass (for shunts rated below 10,000A) or copper (for shunts rated 10,000A and higher)
- Constant current distribution to shunt strips
- Terminal blocks are slotted to receive one-quarter (1/4) inch bar per slot
- STD Accuracy ±0.25% (0.1% available upon request.)



### RECOMMENDATIONS

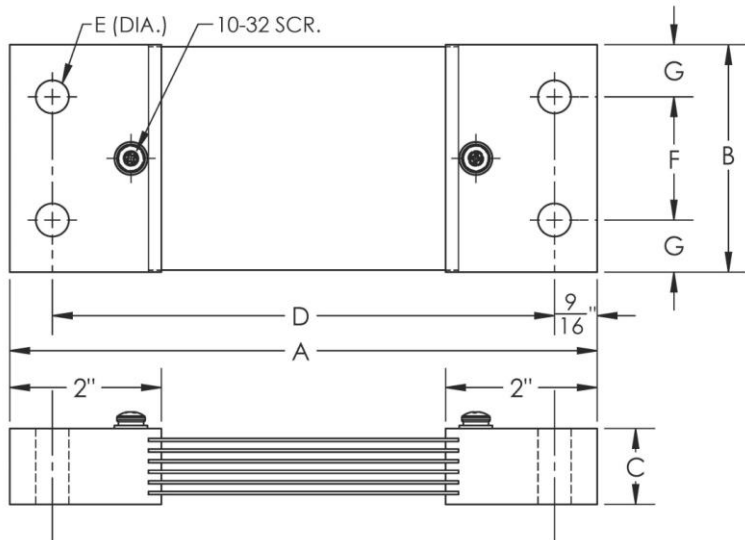
- Shunts should be mounted on the grounded side of the circuit (or mounted on the grounded side of circuits above 750 volts for panel mounted shunts with insulated bases.)
- Shunts should run for no more than two-thirds (2/3) the rated current under normal conditions as per AIEEE standards.
- The manganin shunt strip must not exceed 145°C, as this will cause permanent change in resistance.
- If longer lead lengths are necessary, the additional IR (millivolt) drop in the leads must be taken into consideration when ordering instruments.
- Shunts may be connected (without error) in parallel to measure heavy currents providing each shunt has a separate pair or millivolt leads connected to the instrument terminals.
- The resistance blades of the shunt should be mounted in a vertical position with the longitudinal axis of the shunt in a horizontal position in order to promote the free convectonal flow of air.

### 50 mV

Catalog Number	AMP	A	B	C	D	E	F	G
202-300-50	300	5 7/8	1 3/4	1/2	4 3/4	7/16	1	3/8
202-400-50	400	5 7/8	2	3/4	4 3/4	7/16	1 1/4	3/8
202-500-50	500	5 7/8	2	3/4	4 3/4	7/16	1 1/4	3/8
202-600-50	600	5 7/8	2	3/4	4 3/4	7/16	1 1/4	3/8
202-750-50	750	5 7/8	2 1/4	3/4	4 3/4	7/16	1 1/2	3/8
202-800-50	800	5 7/8	2 3/8	3/4	4 3/4	7/16	1 1/2	7/16
202-1000-50	1000	5 7/8	2 1/2	1	4 3/4	7/16	1 1/2	1/2
202-1200-50	1200	5 7/8	3	1	4 3/4	7/16	1 1/2	11/16

### 100 mV

Catalog Number	AMP	A	B	C	D	E	F	G
202-300-100	300	7 3/4	1 3/4	1/2	6 5/8	7/16	1	3/8
202-400-100	400	7 3/4	2	3/4	6 5/8	7/16	1 1/4	3/8
202-500-100	500	7 3/4	2	3/4	6 5/8	7/16	1 1/4	3/8
202-600-100	600	7 3/4	2	3/4	6 5/8	7/16	1 1/4	3/8
202-750-100	750	7 3/4	2 1/4	3/4	6 5/8	7/16	1 1/2	3/8
202-800-100	800	7 3/4	2 3/8	3/4	6 5/8	7/16	1 1/2	7/16
202-1000-100	1000	7 3/4	2 1/2	1	6 5/8	7/16	1 1/2	1/2
202-1200-100	1200	7 3/4	3	1	6 5/8	7/16	1 1/2	11/16



AAC	202 SERIES	Rev. A
-----	------------	-----------