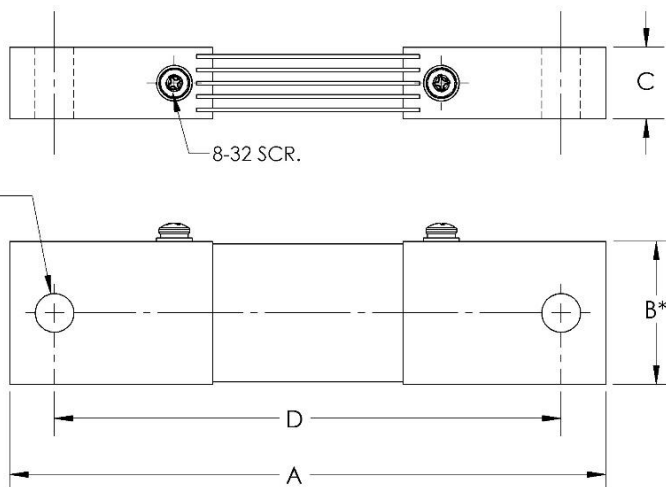
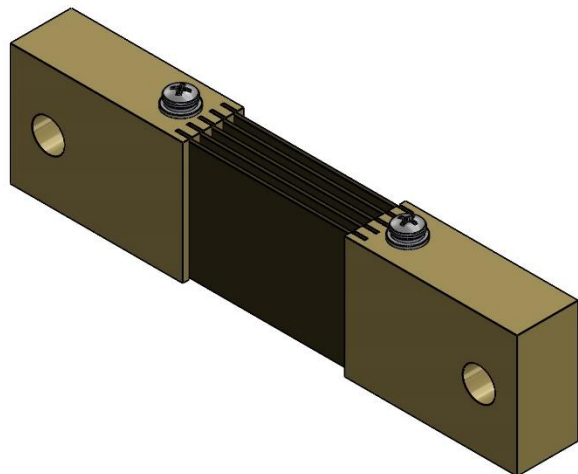


Dimensions in Inches, Tolerances: ±.015 for hole diameters.
 Other tolerances ±.030 unless otherwise noted.
 Dimensions are subject to change without notice.

DC AMMETER SHUNT SERIES 201

FEATURES

- Measuring range: 15A to 600A
- Output range: 50mV and 100mV
- Composed of manganin and either brass (for shunts rated below 10,000A) or copper (for shunts rated 10,000A and higher)
- Constant current distribution to shunt strips
- Terminal blocks are slotted to receive one-quarter (1/4) inch bar per slot
- STD Accuracy ±0.25% (0.1% available upon request.)



RECOMMENDATIONS

- Shunts should be mounted on the grounded side of the circuit (or mounted on the grounded side of circuits above 750 volts for panel mounted shunts with insulated bases.)
- Shunts should run for no more than two-thirds (2/3) the rated current under normal conditions as per AIEEE standards.
- The manganin shunt strip must not exceed 145°C, as this will cause permanent change in resistance.
- If longer lead lengths are necessary, the additional IR (millivolt) drop in the leads must be taken into consideration when ordering instruments.
- Shunts may be connected (without error) in parallel to measure heavy currents providing each shunt has a separate pair or millivolt leads connected to the instrument terminals.
- The resistance blades of the shunt should be mounted in a vertical position with the longitudinal axis of the shunt in a horizontal position in order to promote the free convectonal flow of air.

50 mV

Catalog Number	AMP	A	B*	C	D	E
201-15-50	15	4 1/8	5/8	3/8	3 5/16	11/32
201-20-50	20	4 1/8	5/8	3/8	3 5/16	11/32
201-50-50	50	4 1/8	5/8	3/8	3 5/16	11/32
201-75-50	75	4 1/8	5/8	3/8	3 5/16	11/32
201-100-50	100	4 1/8	5/8	3/8	3 5/16	11/32
201-125-50	125	4 1/8	13/16	3/8	3 5/16	11/32
201-150-50	150	4 1/8	15/16	3/8	3 5/16	11/32
201-175-50	175	4 1/8	3/4	1/2	3 5/16	11/32
201-200-50	200	4 1/8	13/16	1/2	3 5/16	11/32
201-250-50	250	4 1/8	1 1/16	1/2	3 5/16	11/32
201-300-50	300	4 1/8	1 1/4	1/2	3 5/16	11/32
201-375-50	375	4 5/8	15/16	3/4	3 5/8	13/32
201-400-50	400	4 5/8	1	3/4	3 5/8	13/32
201-500-50	500	4 5/8	1 1/4	3/4	3 5/8	13/32
201-600-50	600	4 5/8	1 1/2	3/4	3 5/8	13/32

100 mV

Catalog Number	AMP	A	B*	C	D	E
201-50-100	50	5 3/4	5/8	3/8	4 15/16	11/32
201-75-100	75	5 3/4	5/8	3/8	4 15/16	11/32
201-100-100	100	5 3/4	5/8	3/8	4 15/16	11/32
201-150-100	150	5 3/4	15/16	3/8	4 15/16	11/32
201-200-100	200	5 3/4	13/16	1/2	4 15/16	11/32
201-250-100	250	5 3/4	1 1/16	1/2	4 15/16	11/32
201-300-100	300	5 3/4	1 1/4	1/2	4 15/16	11/32
201-375-100	375	6 1/4	15/16	3/4	5 5/16	13/32
201-400-100	400	6 1/4	1	3/4	5 5/16	13/32
201-500-100	500	6 1/4	1 1/4	3/4	5 5/16	13/32
201-600-100	600	6 1/4	1 1/2	3/4	5 5/16	1/32

*+.040 -.015

AAC

201 SERIES

Rev.
A