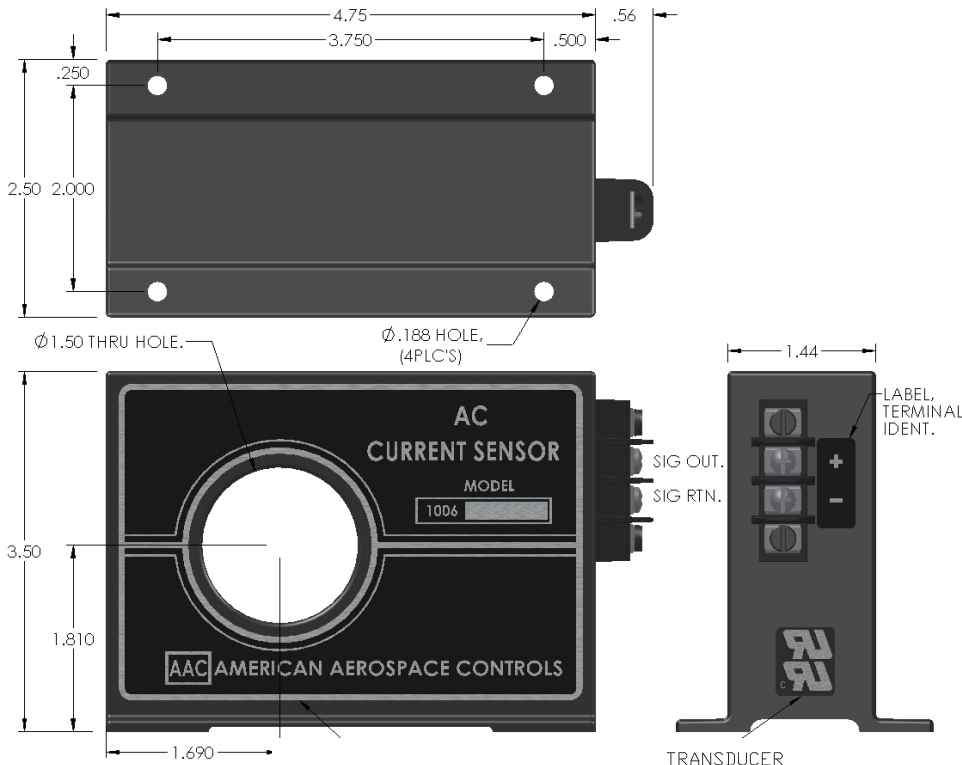


Dimensions in Inches, Tolerances: .XX ± .03 .XXX ± .010



**AC RMS CURRENT TRANSDUCER
SERIES 1006X
4 TO 20mA 2 WIRE LOOP POWER**

PART NUMBER	INPUT CURRENT	PART NUMBER	INPUT CURRENT
1006X-5	0 to 5	1006X-200	0 to 200
1006X-10	0 to 10	1006X-250	0 to 250
1006X-20	0 to 20	1006X-300	0 to 300
1006X-25	0 to 25	1006X-400	0 to 400
1006X-30	0 to 30	1006X-500	0 to 500
1006X-50	0 to 50	1006X-600	0 to 600
1006X-75	0 to 75	1006X-800	0 to 800
1006X-100	0 to 100	1006X-1000	0 to 1000
1006X-150	0 to 150	1006X-1200	0 to 1200

INPUT CURRENT

RANGE	Amps AC (See Table)
CREST FACTORS	Up to 5
FREQUENCY	47 to 63 Hz (Optional Model Available) *
OVERLOAD CONTINUOUS	500Aac or two X FS which ever is greater to a maximum of 1750A

OUTPUT

VOLTAGE SIGNAL	4 to 20mAac FS (Full Scale)
ACCURACY	±0.5% FS (±0.1mA)
RIPPLE	0.2% FS Typical
RESPONSE (10 to 90%)	100 m-sec max.
TEMPERATURE COEFFICIENT	±0.02% FS/°C max.
LOAD RESISTANCE (RL)	250 Ohms Nominal
LOAD RESISTANCE RANGE	0 to 1400 Ohms (See Table I)
REPEATABILITY	±0.1% FS
CURRENT SIGNAL @ OVERLOAD	25mA Typical
PROTECTION	Reverse Polarity Protected

POWER SUPPLY

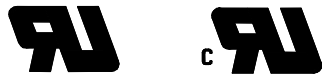
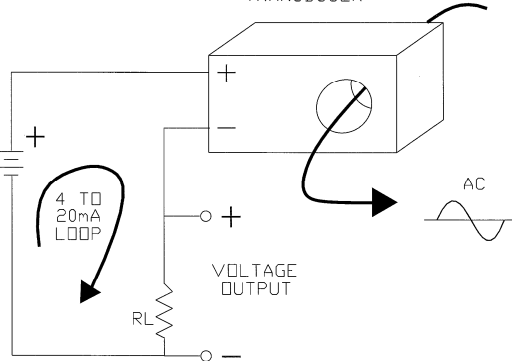
SUPPLY VOLTAGE (PS)	15Vdc Nominal
CURRENT DRAIN	20mA
SUPPLY VOLTAGE RANGE	10 to 35Vdc (See Table I)

ENVIRONMENTAL AND PHYSICAL CHARACTERISTICS

OPERATING TEMPERATURE RANGE	-40° to +85°C
STORAGE TEMPERATURE RANGE	-55° to +85°C
ISOLATION	Input/Output/Case
CONDUCTOR CABLE VOLTAGE	1.5KV max. (5KV with Insul. Cable)
CASE	Molded Plastic meets UL flammability rating 94V-0
WEIGHT	1.2 lbs. max.

* Add suffix **-400** to part number for 400Hz operation.

SUPPLY VOLTAGE PS



UL RECOGNIZED CSA RECOGNIZED

TERMINALS:

5-40 SCREWS, 3/8" CENTER TO CENTER SPACING, ACCEPTS WIRE SIZES UP TO 14 AWG. AND WIRE LUGS UP TO 9/32" WIDE.

$$RL = VX + (.02)RL$$

$$VX = 6V$$

$$RL = 6V + (.02)(1400) = 34Vdc$$

TABLE I

SUPPLY (PS) VS LOAD RESISTANCE (RL)

SUPPLY	LOAD RESISTANCE
11Vdc to 35Vdc	0 to 250 Ohms
16Vdc to 35Vdc	0 to 500 Ohms
21Vdc to 35Vdc	0 to 750 Ohms
26Vdc to 35Vdc	0 to 1000 Ohms
28Vdc to 35Vdc	0 to 1100 Ohms
34Vdc to 35Vdc	0 to 1400 Ohms

AAC	Drawing Number 700-1006X	Rev. Q
------------	-------------------------------------	-------------------