

ENGINEERING CAPABILITIES

Production
Design Tools

- Space Flight
- Mil Grade
- Aircraft DO-160
- Rail Transit
- Industrial Grade

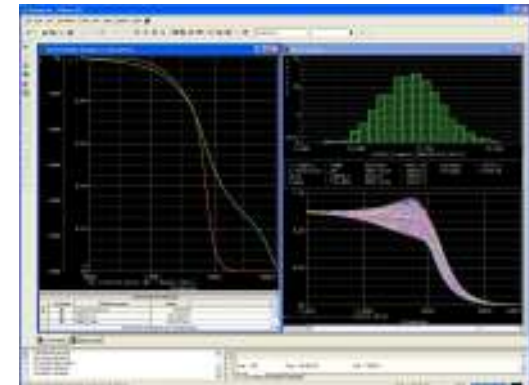
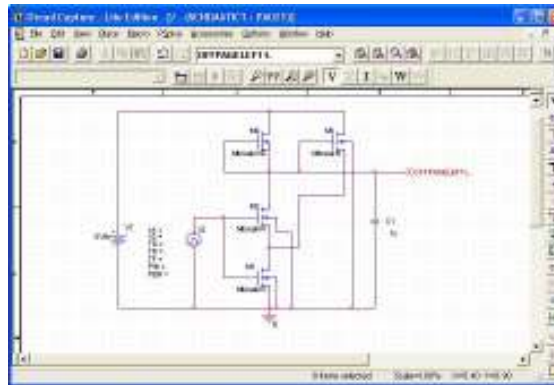
Solid Works
3D modeling



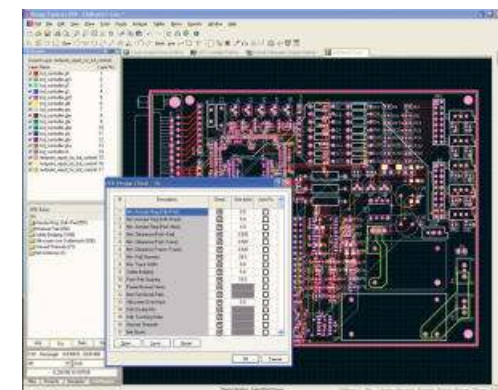
ENGINEERING CAPABILITIES

Production
Design Tools

Micro-SimsPspice
- Circuit Analysis



Altium Designer 8.3
- PCB design



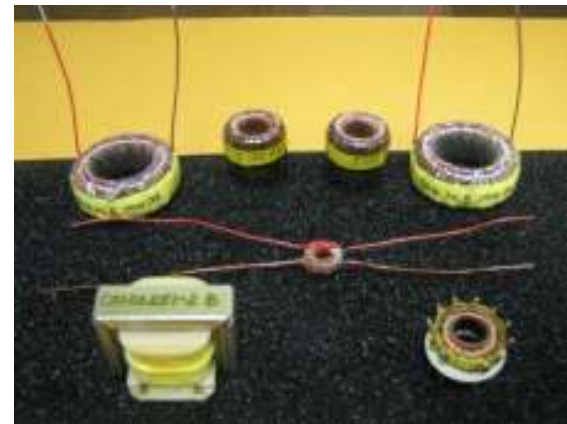
CARBase: DSP strengthens data verification with additional DRDs

ENGINEERING CAPABILITIES

Production
Design Tools

Custom Torroids and Magnetics

- Mil Std 981 Magnetics for high reliability



ENGINEERING
CAPABILITIES
Prototype
Development
Tools

PCB Plotter utilizing Circuit
Cam 6.0 and BoardMaster
5.0 software for rapid pcb
fabrication in house



ENGINEERING CAPABILITIES

Testing

Environmental

- Thermal: - 55C to 125C
- Burn in/Life
- Thermal Shock
- Humidity
- Moisture resistance
- Stress screening
- Live 24 hr data acquisition systems



ENGINEERING CAPABILITIES

Testing

Vibration

- Random – 25 Gs
- Sine – 30 Gs
- Shock



ENGINEERING CAPABILITIES

Testing

Electrical

- AC Power Sources
 - 1 amp to 400 ampAC
 - 20 to 2000 Hz
- DC Power Sources
 - 1 amp to 2000 ampDC



EMI

- Electrical Fast Transient Burst (FTB)
 - EN 61000-4-4:1995 applied
 - EN 61000-4-4:2004 applied
- Signal Generators
- Spectrum Analyzers
- Line Stabilization Networks
- Conducted Susceptibility CS114

