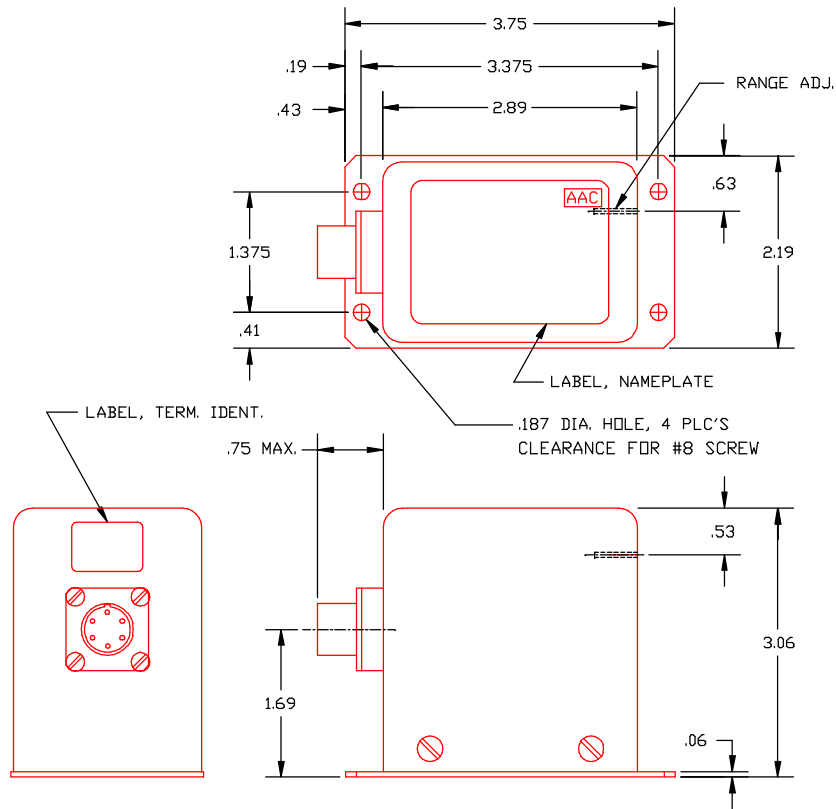


**FREQUENCY TRANSDUCER
SERIES S350L**



<u>PART NO.</u>	<u>RANGE (Hz F.S.)</u>	<u>PART NO.</u>	<u>RANGE (Hz F.S.)</u>
S350L-100	100	S350L-2K	2K
S350L-200	200	S350L-3K	3K
S350L-300	300	S350L-5K	5K
S350L-500	500	S350L-10K	10K
S350L-1K	1K	S350L-20K	20K

AC INPUT

FREQUENCY RANGES	See Table
SENSITIVITY, MINIMUM	20mV RMS 5% to 100% F.S. (sine or sq. wave)
SENSITIVITY, MAXIMUM	There shall be no signal output for an input signal of 5mV RMS or less over the frequency range of D.C. to 20KHz
PULSE WIDTH	Minimum duration must equal 20% of the period of the maximum full scale input frequency.
IMPEDANCE	5000 Ohms minimum
VOLTAGE RANGE	The max. allowable input voltage is a function of input freq. and is equal to the input freq. divided by 2 (up to a max. of 50V RMS).
INPUT	Transformer coupled may be connected either differentially or signal ended.
COMMON MODE REJECTION	60dB @ 60Hz with input connected differential.

OUTPUT

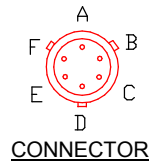
VOLTAGE SIGNAL	0 to 5Vdc F.S. with 5mA max. current
LINEARITY	±0.1% of FS freq. @ 26Vdc power
OUTPUT IMPEDANCE	1 Ohm max.
RIPPLE	<0.1% pk @ F.S. output increasing to approximately 1% pk-pk 1/10 F.S. input freq.
ADJUSTMENT	A trimpoint adjusts the gains such that a 5Vdc max. output may be established for freq. Input 1/2 F.S. min.
LONG TERM STABILITY	±0.2% F.S. per year
RESPONSE	30/F where F is the max. F.S. freq. To 63%
TEMPERATURE COEFFICIENT	±0.01%/°C of F.S. freq.

POWER SUPPLY

SUPPLY VOLTAGE	+22 to 30Vdc @ 120mA max.
----------------	---------------------------

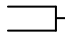

ENVIRONMENTAL AND PHYSICAL CHARACTERISTICS

OPERATING TEMPERATURE	-48°C to +74°C
STORAGE TEMPERATURE	-55°C to +85°C
ISOLATION	Input/Output/Power/Case
INSULATION RESISTANCE	100M-Ohms @ 500Vdc
VIBRATION	6g RMS 20Hz to 2KHz
ALTITUDE	Sea Level to 80,000 ft.
WEIGHT	3 lbs. Max.
FINISH	Orange paint per FED-STD-595 No. 12197 or equiv.



CONNECTOR
CONNECTOR P/N
PT02E-10-6P-023
OR EQUIV.
MATING CONNECTOR
MS3126F-10-6S

TERMINAL IDENTIFICATION

- A. SUPPLY VOLTAGE (+)
- B. SUPPLY VOLTAGE (-)
- C.  DIFFERENTIAL INPUT
- D.  OUTPUT SIGNAL (RTN)
- E. OUTPUT SIGNAL (+)

AAC	Drawing Number 700-S350L	Rev. E
------------	-------------------------------------	-------------------