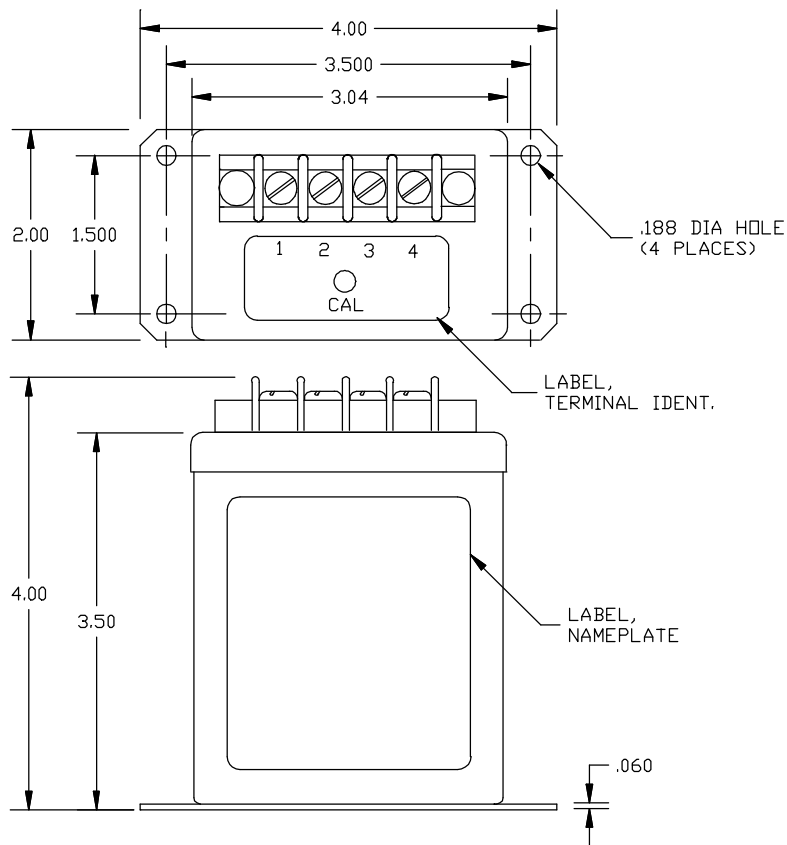


Dimensions in Inches, Tolerances: .XX ± .03 .XXX ± .010

**AC VOLTAGE TRANSDUCER
SERIES V
SELF - POWERED**



<u>PART NUMBER</u>	<u>INPUT VOLTAGE</u>	<u>APPLICATION</u>	<u>TRANSIENT OVERLOAD SEC/HR</u>
V-120	0 to 150V	115/120V	220V
V-220	0 to 300V	208/220/240V	375V
V-440	0 to 500V	440/480V	650V

INPUT
 RANGE Vac See Table
 FREQUENCY 47 to 1000Hz
 LINEAR OVER RANGE 20% of Range
 TRANSIENT CAPABILITY See Table
 DIELECTRIC 2KV RMS, 60Hz, 1 min.
 BURDEN 2VA max.

OUTPUT
 CURRENT SIGNAL 0 to 1mA FS (Full Scale)
 ACCURACY * (60Hz) ±0.25% FS
 (47 to 1000Hz) ±0.5% FS.
 RIPPLE 0.5% FS peak max.
 RESPONSE (0 to 99%) 400m-sec. max.
 LOAD RESISTANCE RANGE 0 to 11K-Ohms
 CALIBRATION ADJUSTMENT ±10% FS
 STABILITY PER YEAR ±0.1% FS

ENVIRONMENTAL AND PHYSICAL CHARACTERISTICS
 OPERATING TEMPERATURE -20° to +70°C
 STORAGE TEMPERATURE -55° to +85°C
 ISOLATION Input/Output/Case
 INSULATION RESISTANCE 100m-Ohms min. @ 500Vdc
 SURGE CAPABILITY IEEE SWC transient test
 WEIGHT 16 oz. Typ.

* INCLUDES COMBINED WORSE CASE EFFECTS OF TEMPERATURE AND LOAD CHANGES.

TERMINAL IDENTIFICATION

1. OUTPUT SIGNAL (+)
2. OUTPUT (RTN)
3. AC INPUT
4. AC INPUT

NOTE: MOLDED TERMINAL BLOCK WITH 8-32 SCREWS 7/16 IN. CENTER TO CENTER SPACING ACCEPTS WIRE SIZES UP TO 12 AWG AND LUGS UP TO 3/8 IN. WIDE.

ADD "-E" AND OR "-F" TO PART NUMBER FOR SPECIAL OPTIONS

"-E"
 OUTPUT VOLTAGE OPTION ADD -E PLUS DESIRED OUTPUT VOLTAGE FROM 0 TO A MAX OF 10

"-F"
 CALIBRATION FREQ. OPTION ADD -F PLUS DESIRED CALIBRATION FREQ. FROM 47 TO 1000

AAC	Drawing Number 700-V	Rev. C
------------	---------------------------------	-------------------