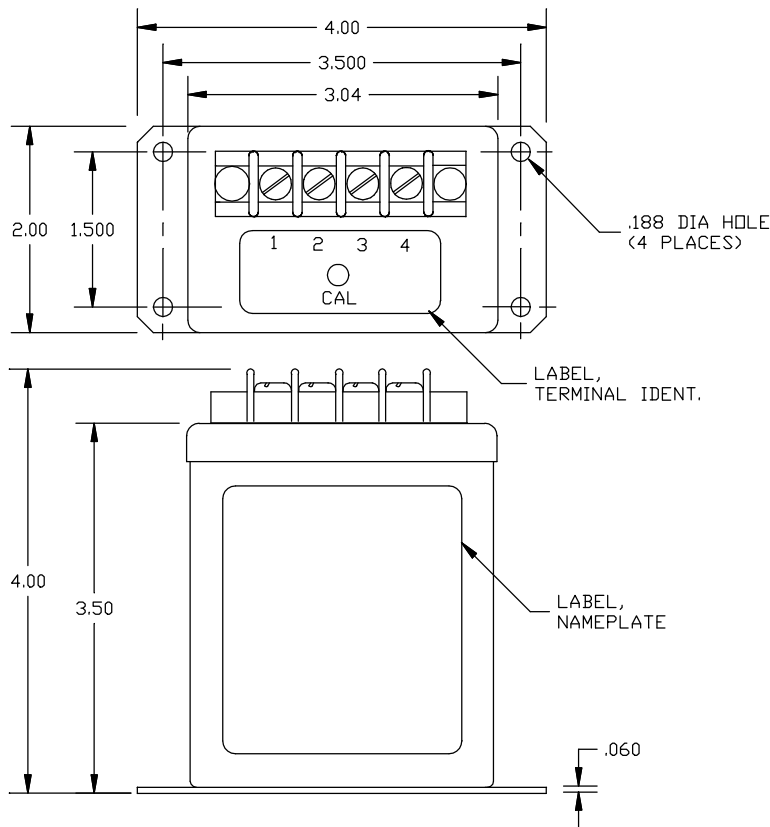


Dimensions in Inches, Tolerances: .XX ± .03 .XXX ± .010

**AC CURRENT TRANSDUCER
SERIES CX
4 TO 20mA LOOP - POWERED**



<u>PART NUMBER</u>	<u>INPUT CURRENT</u>	<u>OVERLOAD CAPABILITY CONTINUOUS</u>	<u>AMPS AC TRANSIENT SEC/HR</u>
CX-1.....	0 to 1A.....	10A.....	50A
CX-2.....	0 to 2A.....	15A.....	100A
CX-5.....	0 to 5A.....	15A.....	250A
CX-10.....	0 to 10A.....	20A.....	500A
CX-20.....	0 to 20A.....	30A.....	500A

INPUT
 RANGE Aac See Table
 FREQUENCY..... 47 to 1000Hz
 LINEAR OVER RANGE 20% of Range
 OVER LOAD CAPABILITY..... Aac See Table
 DIELECTRIC..... 2KV RMS, 60Hz, 1 min.
 BURDEN..... 0.5VA max.

OUTPUT
 CURRENT SIGNAL..... 4 to 20mA FS (Full Scale)
 ACCURACY * (60Hz)..... ±0.25% FS
 (47 to 1000Hz..... ±0.5% FS.
 RIPPLE..... 0.5% FS peak max.
 RESPONSE (0 to 99%)..... 400m-sec. max.
 LOAD RESISTANCE 250 Ohms Nominal
 LOAD RESISTANCE RANGE..... 0 to 250 Ohms @ 15Vdc
 0 to 1100 Ohms @ 32Vdc
 PROTECTION..... Reverse Polarity Protected
 CALIBRATION ADJUSTMENT ±10% of FS
 STABILITY PER YEAR..... ±0.1% FS max.

POWER SUPPLY
 SUPPLY VOLTAGE +15Vdc Nominal
 CURRENT DRAIN..... 20mA
 SUPPLY VOLTAGE RANGE 10 to 35Vdc

ENVIRONMENTAL AND PHYSICAL CHARACTERISTICS
 OPERATING TEMPERATURE -20° to +70°C
 STORAGE TEMPERATURE..... -55° to +85°C
 ISOLATION..... Input/Output/Case
 INSULATION RESISTANCE..... 100m-Ohms min. @ 500Vdc
 SURGE CAPABILITY..... IEEE SWC transient test
 WEIGHT 16 oz. Typ.

* INCLUDES COMBINED WORSE CASE EFFECTS OF TEMPERATURE, SUPPLY VOLTAGE AND LOAD CHANGES.

TERMINAL IDENTIFICATION

1. OUTPUT SIGNAL (+)
2. OUTPUT (RTN)
3. AC INPUT
4. AC INPUT

NOTE: MOLDED TERMINAL BLOCK WITH 8-32 SCREWS 7/16 IN. CENTER TO CENTER SPACING. ACCEPTS WIRE SIZES UP TO 12 AWG AND LUGS UP TO 3/8 IN. WIDE.

ADD "-F" TO PART NUMBER PLUS DESIRED CALIBRATION FREQ. FROM 47 TO 1000Hz FOR CALIBRATION FREQ. OPTION.

AAC	Drawing Number 700-CX	Rev. E
------------	----------------------------------	-------------------