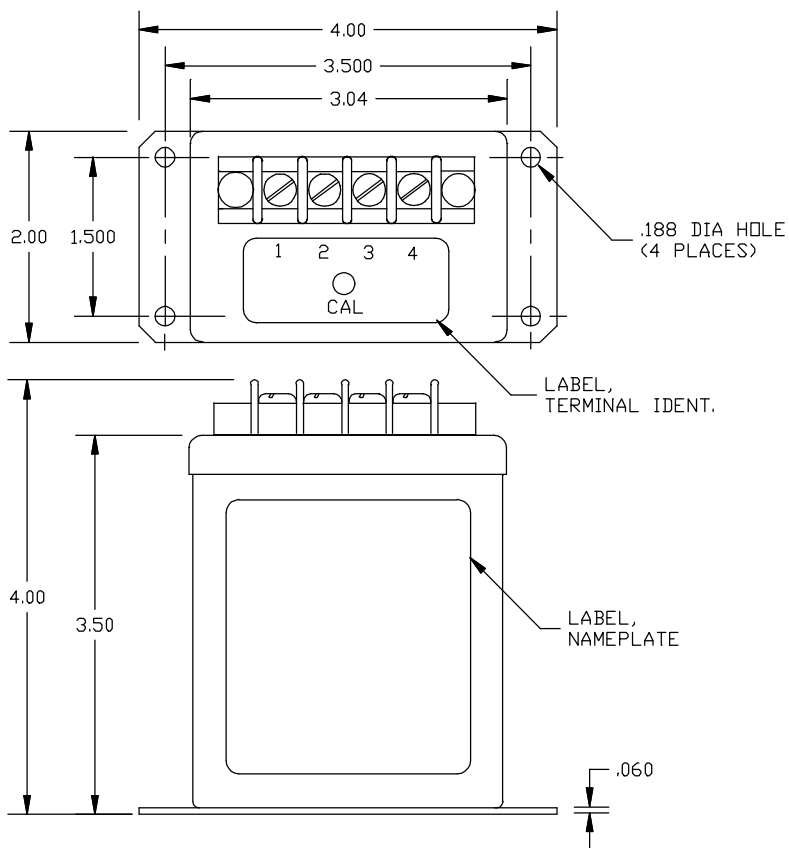


Dimensions in Inches, Tolerances: .XX ± .03 .XXX ± .010

**AC CURRENT TRANSDUCER
SERIES C
SELF - POWERED**



PART NUMBER	INPUT CURRENT	OVERLOAD CAPABILITY	
		CONTINUOUS	AMPS AC TRANSIENT SEC/HR
C-1.....	0 to 1A	10A	50A
C-2.....	0 to 2A	15A	100A
C-5.....	0 to 5A	15A	250A
C-10.....	0 to 10A	20A	500A
C-20.....	0 to 20A	30A	500A

INPUT

RANGE	Aac See Table
FREQUENCY	47 to 1000Hz
LINEAR OVER RANGE	20% of Range
OVER LOAD CAPABILITY	Aac See Table
DIELECTRIC	2KV RMS, 60Hz, 1 min.
BURDEN	0.5VA max.

OUTPUT

CURRENT SIGNAL	0 to 1mA FS (Full Scale)
ACCURACY * (60Hz)	±0.25% FS
(47 to 1000Hz)	±0.5% FS.
RIPPLE	0.5% FS peak max.
RESPONSE (0 to 99%)	400m-sec. max.
LOAD RESISTANCE RANGE	0 to 11K-Ohms
CALIBRATION ADJUSTMENT	±10% FS
STABILITY PER YEAR	±0.1% FS max.

ENVIRONMENTAL AND PHYSICAL CHARACTERISTICS

OPERATING TEMPERATURE	-20° to +70°C
STORAGE TEMPERATURE	-55° to +85°C
ISOLATION	Input/Output/Case
INSULATION RESISTANCE	100m-Ohms min. @ 500Vdc
SURGE CAPABILITY	IEEE SWC transient test
WEIGHT	16 oz. Typ.

* INCLUDES COMBINED WORSE CASE EFFECTS OF TEMPERATURE AND LOAD CHANGES.

TERMINAL IDENTIFICATION

1. OUTPUT SIGNAL (+)
2. OUTPUT (RTN)
3. AC INPUT
4. AC INPUT

NOTE: MOLDED TERMINAL BLOCK WITH 8-32
SCREWS 7/16 IN. CENTER TO CENTER
SPACING ACCEPTS WIRE SIZES UP TO 12 AWG
AND LUGS UP TO 3/8 IN. WIDE.

ADD "-E" AND OR "-F" TO PART NUMBER FOR SPECIAL OPTIONS

"-E"
OUTPUT VOLTAGE OPTION ADD -E
PLUS DESIRED OUTPUT VOLTAGE
FROM 0 TO A MAX OF 10

"-F"
CALIBRATION FREQ. OPTION ADD
-F PLUS DESIRED CALIBRATION
FREQ. FROM 47 TO 1000

AAC

**Drawing Number
700-C**

**Rev.
C**