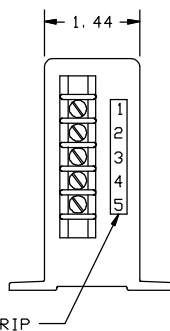
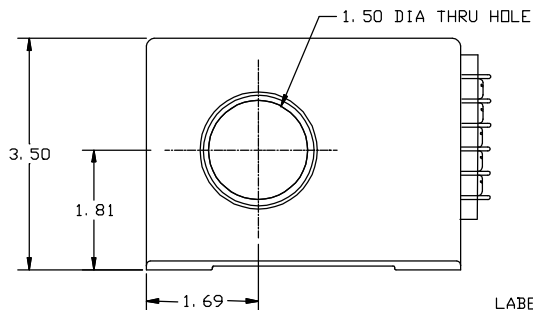
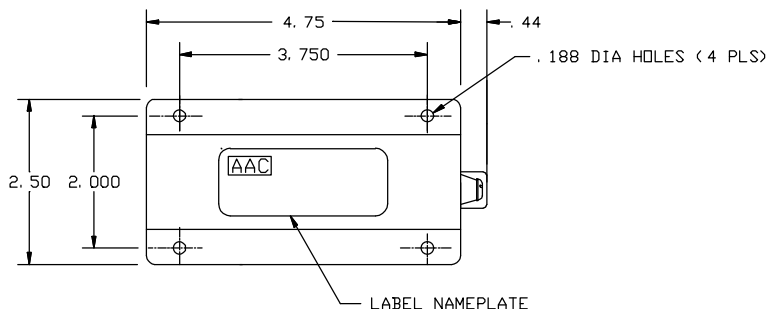


**AC RMS CURRENT TRANSDUCER  
SERIES S786**

<u>PART NUMBER</u>	<u>CURRENT RANGE</u>	<u>PART NUMBER</u>	<u>CURRENT RANGE</u>
S786-5	0 to 5	S786-200	0 to 200
S786-10	0 to 10	S786-250	0 to 250
S786-20	0 to 20	S786-300	0 to 300
S786-25	0 to 25	S786-400	0 to 400
S786-50	0 to 50	S786-500	0 to 500
S786-75	0 to 75	S786-600	0 to 600
S786-100	0 to 100	S786-800	0 to 800
S786-150	0 to 150	S786-1000	0 to 1000



**INPUT RANGE**

CURRENT RANGE..... See Table Aac FS (Full Scale)  
 CURRENT OVERLOAD CONTINUOUS ..... 500Aac or two X FS which is greater  
 FREQUENCY RANGE ..... 60 Hz (400Hz Models available)

**OUTPUT**

VOLTAGE SIGNAL ..... 0 to +5Vdc FS  
 ACCURACY ..... ±0.5% FS  
 LINEARITY ..... ±0.20% FS  
 RESPONSE TIME (10 TO 90%)..... 130 ms typ.  
 CREST FACTOR ..... 0 to 5  
 OUTPUT IMPEDANCE ..... 10 Ohms max.  
 OUTPUT RIPPLE ..... 10mV RMS typ.  
 OUTPUT LOAD ..... 10K Ohms min.  
 SHORT CIRCUIT ..... Protected  
 TEMPERATURE COEFFICIENT ..... ±0.01% FS/°C max.

**POWER SUPPLY**

SUPPLY VOLTAGE ..... +14 TO +32Vdc  
 TRANSIENT PROTECTION ..... ±60V (t<100ms)  
 CURRENT DRAIN ..... 10mA max.  
 REVERSE POLARITY PROTECTION..... 100µA max current drain without damage

**ENVIRONMENTAL AND PHYSICAL CHARACTERISTICS**

OPERATING TEMPERATURE ..... -40° to +85°C  
 STORAGE TEMPERATURE ..... -45° to +85°C  
 OPERATING HUMIDITY ..... 0% to 95% RH  
 DIELECTRIC STRENGTH ..... 1500V RMS terminals 1-5 to case  
 INSULATION RESISTANCE ..... 200 M-Ohms min.  
 CONDUCTOR CABLE VOLTAGE ..... 1.5KV max. (5KV with insulated cable)  
 ATTITUDE..... Unit will perform as specified when mounted in any position.

CASE..... Molded Plastic meets UL Flammability 94V-0  
 WEIGHT ..... 1.2lbs max

MOLDED TERMINAL BLOCK WITH 5-40 TERMINAL SCREWS, 3/8 IN. CENTER TO CENTER SPACING. ACCEPTS WIRE SIZES TO 14 AWG AND WIRE LUGS UP TO 9/32 IN. WIDE.

**TERMINAL IDENTIFICATION**

- 1- SUPPLY VOLTAGE (+)
- 2- SUPPLY (RTN)
- 3- OUTPUT SIGNAL (+)
- 4- OUTPUT (RTN)
- 5- SPARE

<b>AAC</b>	<b>Drawing Number 700-S786-1006</b>	<b>Rev. A</b>
------------	---	-------------------