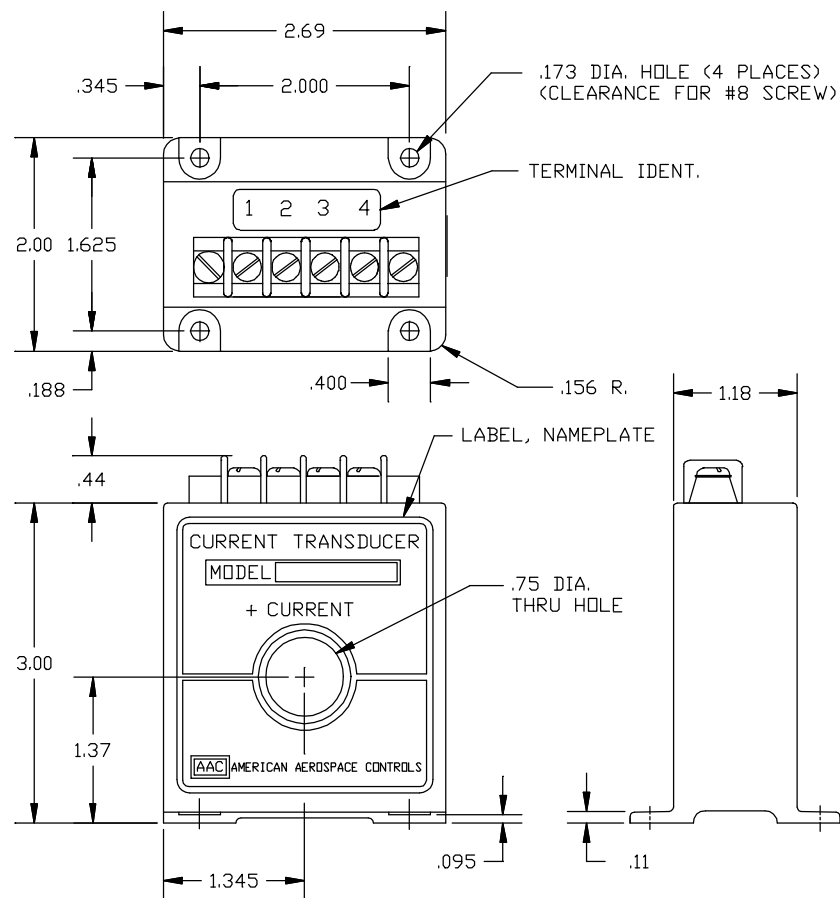


Dimensions in Inches, Tolerances: .XX ± .03 .XXX ± .010

**DC CURRENT TRANSDUCER
SERIES S770**



<u>PART NUMBER</u>	<u>CURRENT RANGE</u>	<u>PART NUMBER</u>	<u>CURRENT RANGE</u>
S770-20	0 to 20	S770-50	0 to 50
S770-25	0 to 25	S770-60	0 to 60
S770-30	0 to 30	S770-70	0 to 70
S770-40	0 to 40	S770-100	0 to 100

INPUT

RANGE	See Table
OVERLOAD CONTINUOUS	±2000Adc
FREQUENCY RANGE	DC to 350Hz

OUTPUT

VOLTAGE SIGNAL	0 to +5Vdc
ACCURACY	±1% FS
RESPONSE (10 to 90%)	1 m sec.
OUTPUT IMPEDANCE	10 Ohms
LOAD RESISTANCE	10k Ohms min
TEMPERATURE COEFFICIENT	±.02%FS per °c max.
OUTPUT PROTECTION	Short Circuit

POWER SUPPLY

SUPPLY VOLTAGE	+12Vdc to +36Vdc
CURRENT DRAIN	10mAdc max.
PROTECTION	Reverse polarity protected
TRANSIENT PROTECTION	±60V (T<5mS)

ENVIRONMENTAL AND PHYSICAL CHARACTERISTICS

OPERATING TEMPERATURE RANGE	-40° to +85°C
STORAGE TEMPERATURE RANGE	-40° to +85°C
ISOLATION	Input to output 5KV rms 60Hz/1min.
INSULATION RESISTANCE	500 M-Ohms @ 500Vdc
CASE MATERIAL	Molded Plastic meets UL flammability rating 94V-O
WEIGHT	10 oz. Max.

TERMINAL IDENTIFICATION

1. SUPPLY VOLTAGE (+)
2. SUPPLY (RTN)
3. OUTPUT (RTN)
4. OUTPUT SIGNAL (+)

TERMINAL SCREWS:

5-40 SCREWS, 3/8" CENTER TO CENTER SPACING
ACCEPTS WIRE SIZES UP TO 14 AWG. AND WIRE
LUGS UP TO 9/32 WIDE.

AAC

**Drawing Number
700-S770**

**Rev.
C**