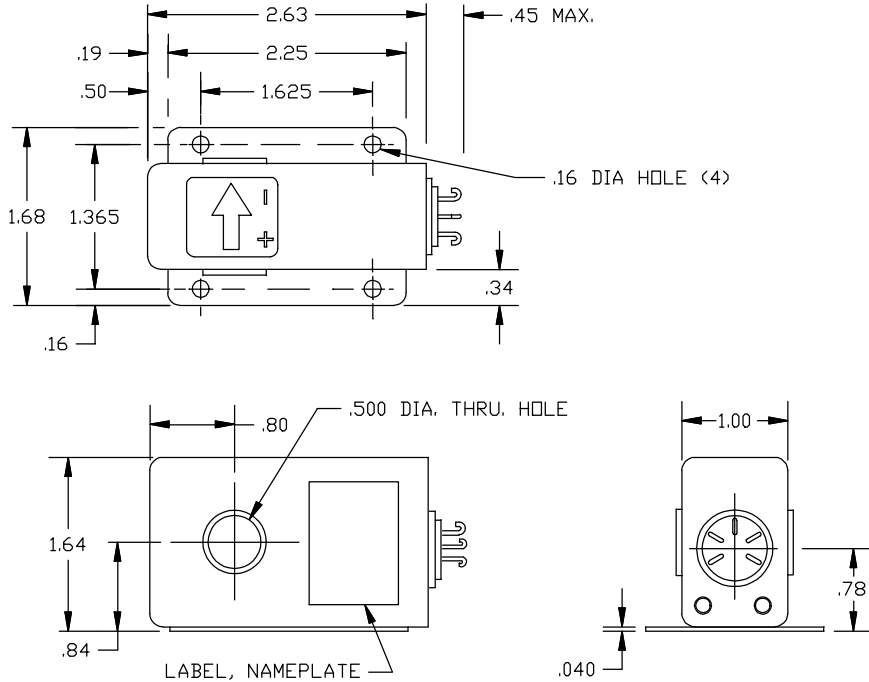


Dimensions in Inches, Tolerances: .XX ± .03 .XXX ± .010

**DC CURRENT TRANSDUCER  
SERIES S767**



<u>PART CURRENT NUMBER</u>	<u>CURRENT RANGE</u>	<u>PART NUMBER</u>	<u>RANGE</u>
S767-10.....	0 to 10mA	S767-200.....	0 to 200mA
S767-20.....	0 to 20mA	S767-250.....	0 to 250mA
S767-50.....	0 to 50mA	S767-500.....	0 to 500mA
S767-100.....	0 to 100mA	S767-1A.....	0 to 1A

**INPUT**

CURRENT RANGE ..... See Table  
CURRENT OVERLOAD ..... 100Adc

**OUTPUT**

VOLTAGE SIGNAL ..... 0 to +5Vdc FS (Full Scale)  
ACCURACY ..... ± 1% FS (±50mV)  
OUTPUT IMPEDANCE ..... 100 Ohms max.  
RIPPLE ..... 1% FS (RMS) max.  
TEMPERATURE COEFFICIENT ..... ±.02% FS/°C max.  
LONG TERM STABILITY ..... ±.2% FS/yr  
RESPONSE (10 TO 90%) ..... 50 m-sec max.  
PROTECTION ..... Continuous Short ckt Without damage

**POWER SUPPLY**

SUPPLY VOLTAGE ..... 22Vdc to 36Vdc  
CURRENT DRAIN ..... 12mAdc  
OVER VOLTAGE PROTECTION ..... Terminals A & B ±36Vdc without damage  
REVERSE POLARITY PROTECTION .. 10µA max. current drain

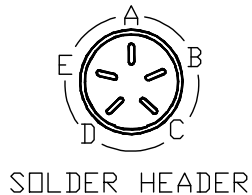
**ENVIRONMENTAL AND PHYSICAL CHARACTERISTICS**

OPERATING TEMPERATURE ..... -40° to +85°C  
STORAGE TEMPERATURE ..... -55° to +85°C  
HUMIDITY ..... 0% to 95% RH  
MOISTURE RESISTANCE ..... MIL-STD-810, Method 507.1, Proc. I  
ALTITUDE ..... Sea Level to 10<sup>-5</sup> torr (Hard Vacuum)  
PYROSHOCK (PROTO FLIGHT) ..... 100Hz @ 50g +6dB/Oct to 1100g @ 1KHz flat to 10KHz  
VIBRATION (SINE) ..... 0.06 In. D.A., 10 to 55 Hz  
(RANDOM) ..... Overall 37.9g's 20 to 50 Hz  
+12db/octave 0.084 to 3.0g<sup>2</sup>/Hz.  
3.0 flat. 130 to 300 Hz -6db/octave  
3.0 to .6g<sup>2</sup>/Hz. 300 to 1 flat  
1500 to 2000 Hz -6db/octave 0.60 to 0.33g<sup>2</sup>/Hz.

INSULATION RESISTANCE ..... 100 M-Ohms min. @ 100Vdc  
ATTITUDE ..... Performs in any position.  
FINISH ..... Fuse Tin Plate  
ENCAPSULANT ..... Stycast 2850FT Cat 24LV  
WEIGHT ..... .49lbs max.

**TERMINAL IDENTIFICATION**

- A. SUPPLY VOLTAGE (+)
- B. SUPPLY (RTN)
- C. OUTPUT SIGNAL (+)
- D. OUTPUT (RTN)
- E. CASE GROUND



<b>AAC</b>	<b>Drawing Number 700-S767-903</b>	<b>Rev. D</b>
------------	--	-------------------