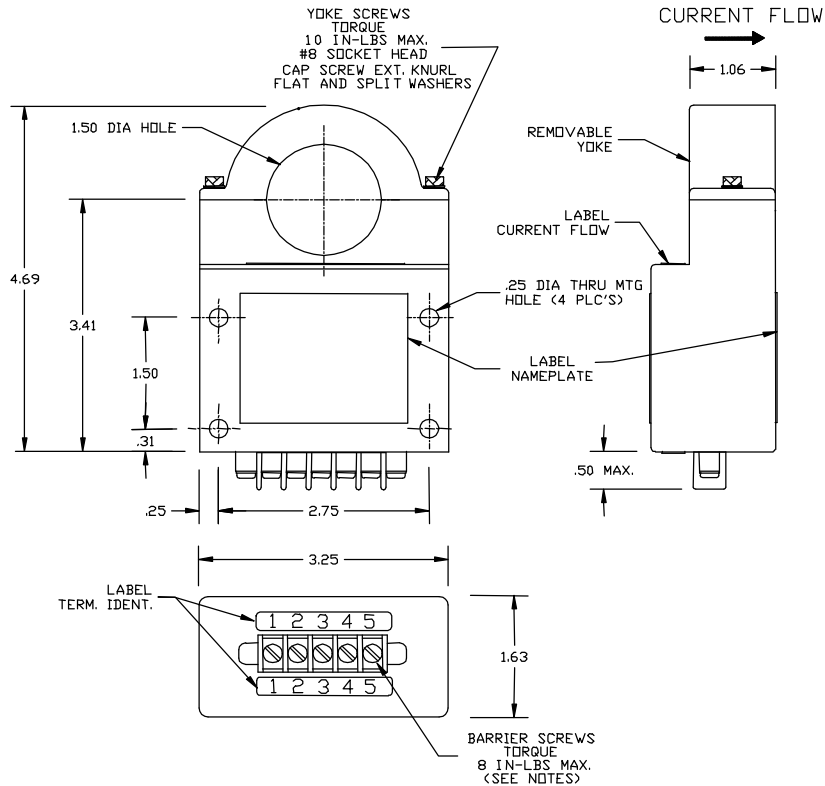


**DC CURRENT TRANSDUCER
PART NUMBER S646-1000**



INPUT

RANGE NOMINAL	0 to 1000Adc Full Scale
OVERLOAD	0 to 5000Adc
VOLTAGE	2500Vdc

OUTPUT

VOLTAGE SIGNAL	0 to +6Vdc
SCALE FACTOR	6mV per Amp
ACCURACY	±2% FS (±20Adc) over temperature range
RESPONSE TIME	200 μ-sec. max.
OUTPUT IMPEDANCE	15Ω Max.
LOAD	50K to ∞
SHORT CIRCUIT	Protected
TRANSIENT PROTECTION	t ≤ 1ms ±200V

POWER SUPPLY

SUPPLY VOLTAGE	+15Vdc (±0.4Vdc) with source impedance 0 to 50 Ohms
POWER CONSUMPTION	0.5 W max.
PROTECTION	Reverse Polarity Protected
TRANSIENT PROTECTION	t ≤ 100ms +60V/-50V

ENVIRONMENTAL AND PHYSICAL CHARACTERISTICS

OPERATING TEMPERATURE	-30° C to +60° C
STORAGE TEMPERATURE	-55° C to +85° C
SHOCK	Operating 50g 11m-sec MIL-STD-202 Method 213 Condition A
VIBRATION	Operating 0.06 inch D.A. 10Hz to 55Hz MIL-STD-202 Method 201
HUMIDITY	0 to 95% RH Operating
INSULATION RESISTANCE	500 M-Ohms @ 500Vdc
DIELECTRIC STRENGTH	2500 DC
ATTITUDE	Performs in any position
CASE MATERIAL	Molded plastic (GE LEXAN) meets UL Flammability rating 94V-0
ENCAPSULANT	STYCAST 2850FT CAT 24LV
WEIGHT	12 oz. max.

TERMINAL IDENTIFICATION

1. OUTPUT (+)
2. OUTPUT (RTN)
3. SUPPLY VOLTAGE (+15V)
4. SUPPLY VOLTAGE (RTN)
5. SPARE

NOTE:

1. SUPPLIED WITH 5 PIN TERMINAL BARRIER STRIP. MOLDED TERMINAL BLOCK WITH 6-32 TERMINAL SCREWS AND INT. TOOTH LOCKWASHERS, .325 IN. CENTER TO CENTER SPACING. ACCEPTS WIRE SIZES UP TO 16AWG AND WIRE LUGS TO .250 IN. WIDE.

AAC

**Drawing Number
700-S646**

**Rev.
G**