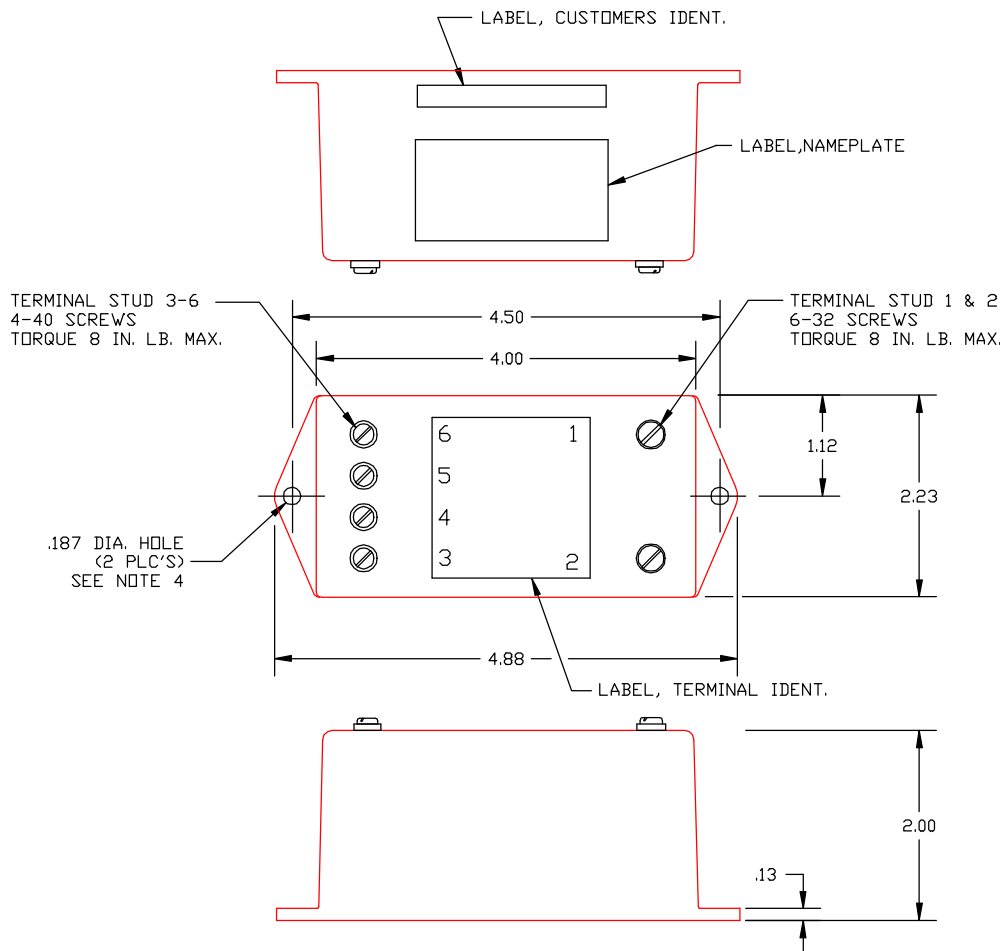


**DC VOLTAGE LEVEL DETECTOR  
PART NUMBER S631-800**



**INPUT**

RANGE ..... 0 to + 800Vdc  
 OVERLOAD (CONTINUOUS) ..... 1000Vdc  
 (TRANSIENT) ..... 2000Vdc for 25M-sec.

**TRIP POINT**

SET POINT ..... +375Vdc  
 HYSTERESIS ..... Auto reset 10Vdc ±5% below trip point  
 REPEATABILITY ..... ± 0.5% of 400Vdc (-25 to + 70°C)

**OUTPUT**

RELAY CONTACT (SPST) ..... Actuated at and above trip point  
 CONTACT RATING ..... 10amp @ 45Vdc  
 RESPONSE ..... 110M-sec. MAX.  
 DIELECTRIC STRENGTH ..... 4000 V RMS coil to contact  
 1000 V RMS between open contact

**POWER SUPPLY**

SUPPLY VOLTAGE ..... +25 to 45Vdc  
 CURRENT DRAIN ..... 50mA max.  
 PROTECTION ..... Reverse polarity protected

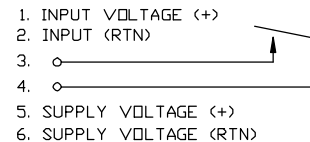
**ENVIRONMENTAL AND PHYSICAL CHARACTERISTICS**

OPERATING TEMPERATURE ..... -25°C to +75°C  
 STORAGE TEMPERATURE ..... -40°C to +85°C  
 SHOCK & VIBRATION ..... IAW ADTRANZ Doc. ABB-ES-091291-1  
 OPERATING HUMIDITY ..... 0 to 95% Relative Humidity  
 INSULATION RESISTANCE ..... 500 M-ohms @ 500Vdc  
 DIELECTRIC STRENGTH ..... 3.3Kv RMS 60Hz  
 CASE ..... Thermoplastics Cylcolac ABS Meets UL  
 Flammability Rating 94 V-0  
 WEIGHT ..... 1.5 lbs. max.

**NOTE:**

1. TERMINALS : 1 -- 2 : 6-32 SCREWS TORQUE 8 IN-LB MAX.  
 3 - 6 : 4-40 SCREWS TORQUE 8 IN-LB MAX.
2. PART TO BE IDENTIFIED WITH ADTRANZ PART NUMBER & REVISION LEVEL IN ACCORDANCE WITH SAE AS478-30, LATEST REVISION. CHARACTER HEIGHT SHALL BE .50 INCH MAX. APPROX. WHERE SHOWN.
3. REFERENCE DOCUMENT NO. E301-010.RFP (XVL).
4. RECOMMENDED MOUNTING HARDWARE #8 SCREW, #8 SPLIT LOCKWASHER AND # 8 FLAT WASHER. TORQUE MAXIMUM 18 IN-LB.

TERMINAL IDENTIFICATION



<b>AAC</b>	<b>Drawing Number 700-S631</b>	<b>Rev. E</b>
------------	------------------------------------	-------------------