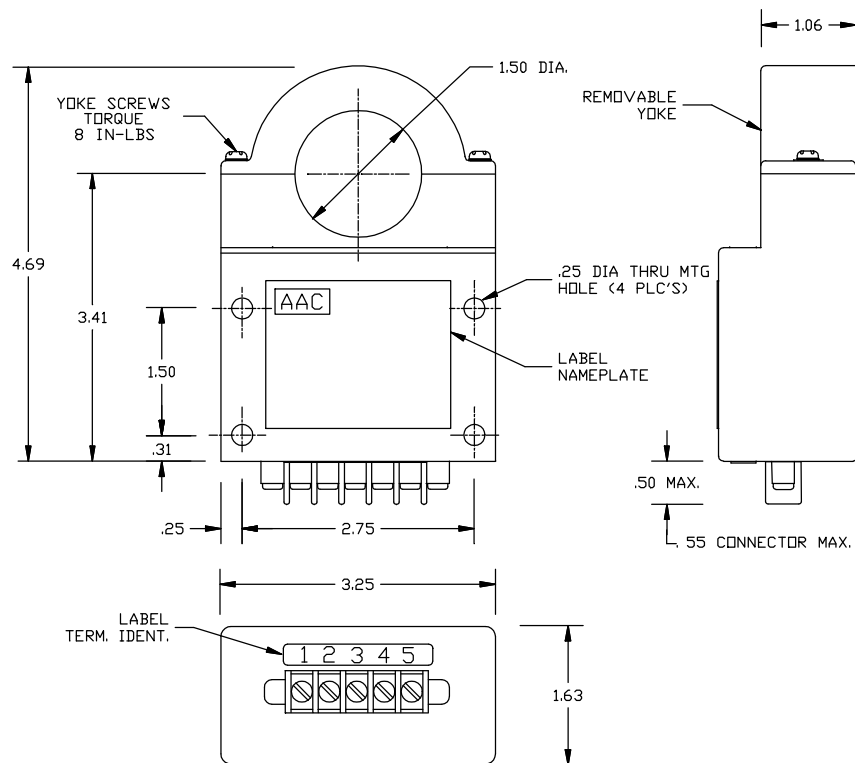


Dimensions in Inches, Tolerances: .XX ± .03 .XXX ± .010

**AC RMS CURRENT TRANSDUCER
SERIES S461
REMOVABLE YOKE TYPE**



PART NO.	INPUT CURRENT	PART NO.	INPUT CURRENT
S461-100	0 TO 100	S461-1000	0 TO 1000
S461-150	0 TO 150	S461-1500	0 TO 1500
S461-250	0 TO 250	S461-2000	0 TO 2000
S461-500	0 TO 500	S461-2500	0 TO 2500
S461-750	0 TO 750	S461-3000	0 TO 3000

INPUT

RANGE See Table (DC or AC Peak)
 FREQUENCY DC to 480Hz
 CREST FACTORS Up to 7
 OVERLOAD 2X range continuously, 10X for 10 sec.

OUTPUT

VOLTAGE SIGNAL 0 to 5Vdc (Full Scale)
 ACCURACY ±1% FS (±50mV)
 RESPONSE (0 to 90%) 100 m-sec
 RIPPLE 25mV RMS @ 60Hz
 TEMPERATURE COEFFICIENT ± .05% FS/°C max.
 OUTPUT IMPEDANCE 1000 Ohms ±5%
 OUTPUT PROTECTION Output terminals 1 & 2 will withstand ±32Vdc or short circuit continuously

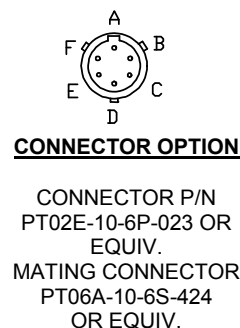
POWER SUPPLY

SUPPLY VOLTAGE +28Vdc ±4Vdc
 CURRENT DRAIN 100mA max.
 OVER VOLTAGE PROTECTION ±35Vdc without damage
 REVERSE POLARITY PROTECTION 10µA max current drain without damage.

ENVIRONMENTAL AND PHYSICAL CHARACTERISTICS

OPERATING TEMPERATURE RANGE -25°C to +71°C
 STORAGE TEMPERATURE RANGE -55°C to +100°C
 DIELECTRIC STRENGTH 350V RMS (all terminals to case)
 INSULATION RESISTANCE 100M-Ohms (all terminals to case)
 ALTITUDE Operating: sea level to 60,000 ft.
 VIBRATION Operating: 0.06 in. D.A., 10 to 55 Hz (Method 201 of MIL-STD-202)
 SHOCK Operating: 50g, 11 m-sec half sine pulse Method 213, Condition A of MIL-STD-202.
 MOISTURE RESISTANCE Will meet Method 106 of MIL-STD-202 and Method 507.1 Proc. 1 of MIL-STD-810.
 OPERATING HUMIDITY 0% to 95% RH
 ATTITUDE Unit will perform as specified when mounted in any position.
 CASE MATERIAL Molded plastic meets UL flammability rating 94V-0
 WEIGHT 12 oz. max.

BARRIER	TERMINAL IDENTIFICATION	CONNECTOR
1	OUTPUT (+)	A
2	OUTPUT (RTN)	B
3	SUPPLY VOLTAGE (+)	C
4	SUPPLY VOLTAGE (RTN)	D
5	SPARE	E
	SPARE	F



NOTES:

1. NORMALLY SUPPLIED WITH 5 PIN TERMINAL BARRIER STRIP. MOLDED TERMINAL BLOCK WITH 6-32 TERMINAL SCREWS, .325 IN. CENTER TO CENTER SPACING. ACCEPTS WIRE SIZES UP TO 16 AWG AND WIRE LUGS TO .250 IN. WIDE. AVAILABLE WITH 6 PIN OPTIONAL CONNECTOR PT02E-10-36P-023 OR EQUIVALENT. ADD LETTER -C AFTER PART NUMBER FOR CONNECTOR OPTION.

AAC	Drawing Number 700-S461-1001	Rev. B
------------	---	-------------------