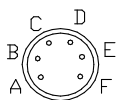
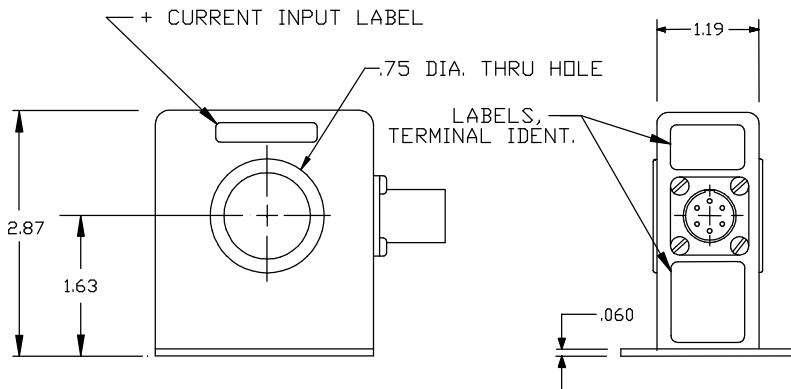
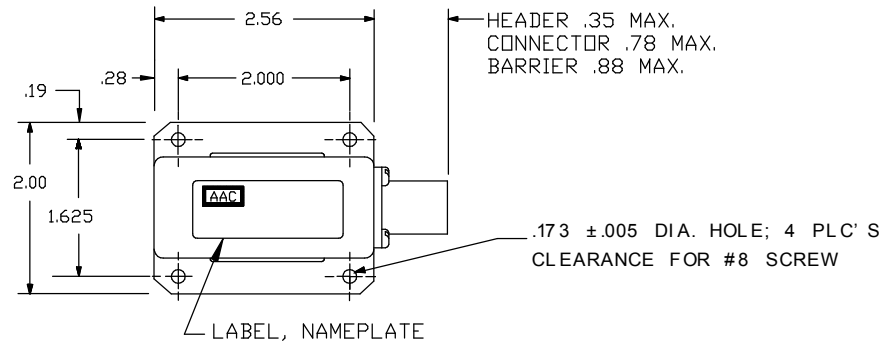
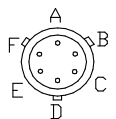


Dimensions in Inches, Tolerances: .XX ± .03 .XXX ± .010

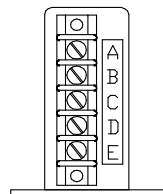
**BIDIRECTIONAL CURRENT SENSOR
SERIES S273**



**SOLDER
HEADER**



CONNECTOR OPTION
ADD "-C" TO
PART NO.
CONNECTOR P/N
PTO2E-10-6P-023 OR
EQUIV.
MATING CONNECTOR
PT06A-10-6S-424



BARRIER OPTION
ADD "-B" TO
PART NO.
BARRIER DETAILS
SEE DWG. 700-702

<u>PART NO.</u>	<u>INPUT CURRENT</u>	<u>ACCURACY</u>	<u>TEMPERATURE COEFFICIENT</u>
S273-25	0 to ±25A	1%	.08%
S273-50	0 to ±50A	1%	.06%
S273-100	0 to ±100A	5%	.04%
S273-150	0 to ±150A	5%	.02%
S273-200	0 to ±200A	5%	.02%
S273-250	0 to ±250A	5%	.02%
S273-300	0 to ±300A	5%	.02%
S273-350	0 to ±350A	5%	.02%

OUTPUT

VOLTAGE SIGNAL	0 to ±5Vdc FS (Full Scale)
ACCURACY	% FS See Table
di/dt ACCURATELY FOLLOWED	Better than 50A/u-sec.
DELAY TIME	Better than 1u-sec.
BANDWIDTH	DC to 100KHz
IMPEDANCE	500 Ohms (25A) 200 Ohms max. (50 -350A)
TEMPERATURE COEFFICIENT	FS/°C max. See Table

POWER SUPPLY

SUPPLY VOLTAGE	±15Vdc ±1Vdc
CURRENT DRAIN	100mAdc max.
REVERSE POLARITY PROTECTION	10µA max. current drain no damage.

ENVIRONMENTAL AND PHYSICAL CHARACTERISTICS

OPERATING TEMPERATURE	-55° to +85°C
STORAGE TEMPERATURE	-55° to +85°C
OPERATING HUMIDITY	0% to 95% RH
MOISTURE RESISTANCE	Will meet Method 106 of MIL-STD-202 & Method 507.1, Procedure I of MIL-STD-810
ALTITUDE	Operating: Sea level to 60,000 ft. Non-operating: Sea level to 120,000 ft. (Method 105, Condition A of MIL-STD-202)
SHOCK	Non-operating: 50g, 11m-sec half sine pulse (Method 213, Condition A of MIL-STD-202)
VIBRATION	Non-operating: 0.06 in. D.A., 10 to 55Hz (Method 201 of MIL-STD-202)
DIELECTRIC STRENGTH	350V RMS dielectric withstanding voltage (Method 301 of MIL-STD-202)
INSULATION RESISTANCE	10M-Ohms min. (Method 302, Condition A of MIL-STD-202)
ATTITUDE	Unit will perform as specified when mounted in any position.
WEIGHT	14 oz. max.

TERMINAL IDENTIFICATION

- A. SUPPLY VOLTAGE (+)
- B. SUPPLY VOLTAGE (-)
- C. SUPPLY VOLTAGE (RTN)
- D. OUTPUT SIGNAL (RTN)
- E. OUTPUT SIGNAL (+)
- F. CASE GROUND



**Drawing Number
700-S273-925**

**Rev.
L**