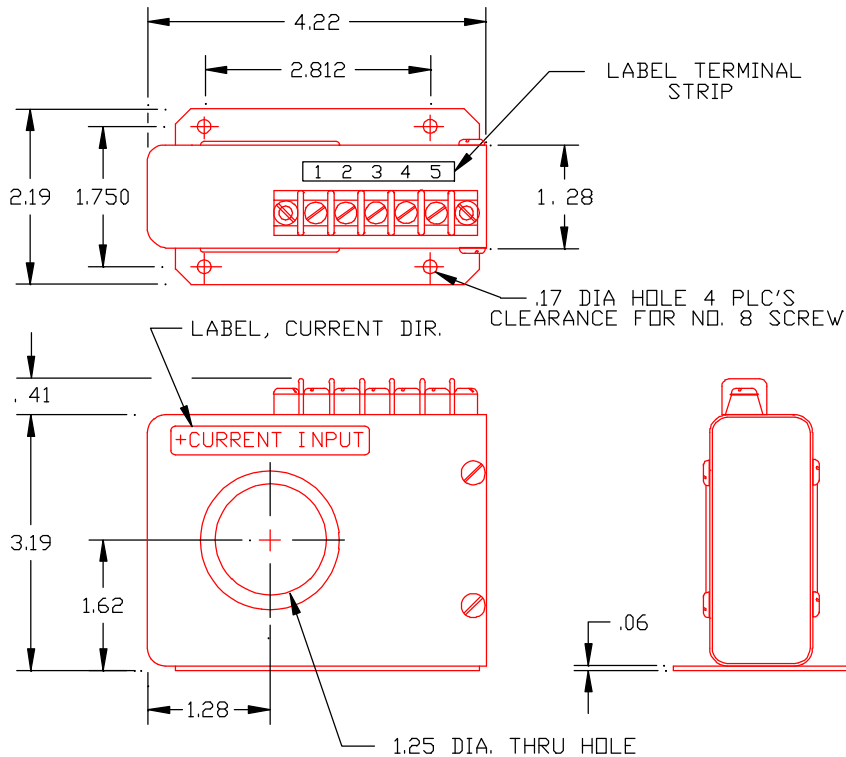


**DC CURRENT SENSOR  
SERIES S218**



| <u>PART NO.</u> | <u>INPUT CURRENT RANGE</u> | <u>PART NO.</u> | <u>INPUT CURRENT RANGE</u> |
|-----------------|----------------------------|-----------------|----------------------------|
| S218-100.....   | 0 TO 100mA                 | S218-1A.....    | 0 TO 1A                    |
| S218-200.....   | 0 TO 200mA                 | S218-2A.....    | 0 TO 2A                    |
| S218-500.....   | 0 TO 500mA                 | S218-5A.....    | 0 TO 5A                    |

**OUTPUT**

|                              |  |
|------------------------------|--|
| VOLTAGE SIGNAL.....          | 0 to +5Vdc FS (Full Scale)   |
| ACCURACY.....                | ±1% FS (±50mV)   |
| RIPPLE.....                  | 2% FS RMS max.   |
| IMPEDANCE.....               | 1000 Ohms ±5%, 100mA to 1A range<br>500 Ohms ±5%, 2A<br>200 Ohms ±5%, 5A |
| RESPONSE.....                | 50 m-sec max. (10 to 90%)  |
| TEMPERATURE COEFFICIENT..... | ± .04%/°C max.   |

**POWER SUPPLY**

|                                  |                                    |
|----------------------------------|------------------------------------|
| SUPPLY VOLTAGE.....              | 28Vdc ±4Vdc                        |
| CURRENT DRAIN.....               | 65mA max.                          |
| REVERSE POLARITY PROTECTION..... | 10µA max. Current Drain- no damage |

**ENVIRONMENTAL AND PHYSICAL CHARACTERISTICS**

|                                  |  |
|----------------------------------|--|
| OPERATING TEMPERATURE RANGE..... | -55°C to +85°C   |
| STORAGE TEMPERATURE RANGE.....   | -60°C to +100°C  |
| INSULATION RESISTANCE.....       | 100 M-Ohms (terminals 1,2,3,&4 to case)  |
| DIELECTRIC STRENGTH.....         | 350V RMS (terminals 1,2,3,&4 to case)  |
| ALTITUDE.....                    | Operating sea level to 60,000 ft.  |
| VIBRATION.....                   | Operating - 0.06 in. D.A., 10 to 55Hz Method 201 of MIL-STD-202.               |
| SHOCK.....                       | Operating 50g, 11 m-sec half sine pulse Method 213 Condition A of MIL-STD-202. |
| MOISTURE RESISTANCE.....         | Will meet Method 106 of MIL-STD-202 and Method 507.1 Proc. 1 of MIL-STD-810    |
| OPERATING HUMIDITY.....          | 0 to 95% RH  |
| ATTITUDE.....                    | Meets spec. for any mounting position.   |
| RIPPLE.....                      | 40mV reflected onto pass-thru line.  |
| WEIGHT.....                      | 1.5 lbs. Max.  |

**TERMINAL IDENTIFICATION**

1. SUPPLY VOLTAGE (+)
2. SUPPLY VOLTAGE (RTN)
3. OUTPUT SIGNAL (RTN)
4. OUTPUT SIGNAL (+)
5. CASE GROUND

**NOTE:**  
MOLDED TERMINAL BARRIER WITH 5-40 TERMINAL SCREWS  
3/8 IN. CENTER TO CENTER SPACING.  
ACCEPTS WIRE SIZES TO 14 AWG AND WIRE LUGS UP TO 9/32 IN. WIDE

|            |  |                   |
|------------|--|-------------------|
| <b>AAC</b> | <b>Drawing Number<br/>700-S218-903</b> | <b>Rev.<br/>G</b> |
|------------|--|-------------------|