

Dimensions in Inches, Tolerances: .XX ± .03 .XXX ± .010

**DC VOLTAGE TRANSDUCER
SERIES S657**

PART NUMBER

RANGE

OVERLOAD

PART NUMBER	RANGE	OVERLOAD
S657-150	0 to ± 150Vdc	± 300Vdc
S657-300	0 to ± 300Vdc	± 600Vdc
S657-500	0 to ± 500Vdc	± 1000Vdc
S657-750	0 to ± 750Vdc	± 1500Vdc
S657-1200	0 to ± 1200Vdc	± 1800Vdc
S657-1500	0 to ± 1500Vdc	± 2000Vdc
S657-2000	0 to ± 2000Vdc	± 3000Vdc

INPUT

RANGE	See Table
OVERLOAD CONTINUOUS	See Table
OVERLOAD TRANSIENT	6Kvdc FOR 100µ-sec
ISOLATION	5Kv RMS 60Hz FOR 1 min.
BURDEN @ FULL SCALE	3mA typ.

OUTPUT

CURRENT SIGNAL	4 to 20mAdc FS (Full Scale)
ACCURACY	±1% FS (±0.2mA max.) over temp. range
POLARITY SENSING	4 to 20mAdc proportional to the absolute Value of the input voltage.

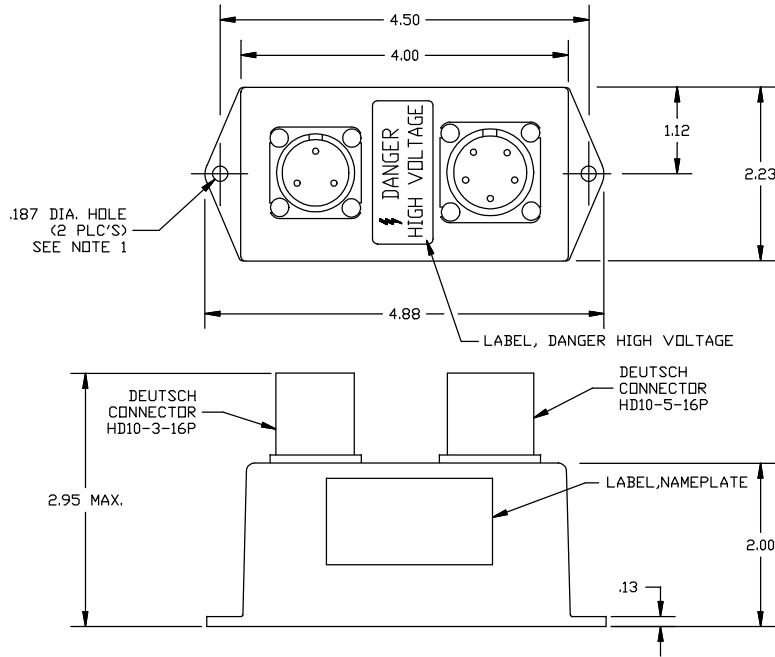
RESPONSE (10 to 90%)	5m-sec. max.
LOAD RESISTANCE	250 Ohms nominal
LOAD RESISTANCE RANGE	0 to 500 Ohms
CURRENT SIGNAL @ OVERLOAD	22mAdc typ.
NOISE FILTERING	1 TO 100KHZ
ISOLATION MODE REJECTION RATIO	>85db @ 10KHZ

POWER SUPPLY

SUPPLY VOLTAGE	+24 ±2Vdc
CURRENT DRAIN	50mA max.
TRANSIENT	60Vdc 5 sec. 100Vdc 1m-sec
PROTECTION	Reverse Polarity Protected

ENVIRONMENTAL AND PHYSICAL CHARACTERISTICS

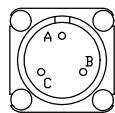
OPERATING TEMPERATURE	-40° to +85°C
STORAGE TEMPERATURE	-45° to +85°C
OPERATION HUMIDITY	0 to 100% relative humidity
SHOCK & VIBRATION	20g shock, 10g @ 5-200Hz
INSULATION RESISTANCE	500M-Ohms @ 500Vdc
DIELECTRIC STRENGTH	1.5Kv RMS 60Hz Continuous.
CASE	Thermoplastics Cyclic ABS UL Flammability rating 94V-0.
WEIGHT	1.5 lbs. max.



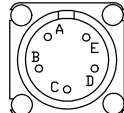
TERMINAL IDENTIFICATION

J1

- J1-A. SPARE
- J1-B. INPUT VOLTS (+/-)
- J1-C. INPUT VOLTS (+/-)



J1
DEUTSCH
CONNECTOR
HD10-3-96P
MATING
CONNECTOR
HD16-3-16S



J2
DEUTSCH
CONNECTOR
HD10-5-16P
MATING
CONNECTOR
HD16-5-16S

TERMINAL IDENTIFICATION

J2

- J2-A. SUPPLY VOLTS (+)
- J2-B. OUTPUT SIGNAL (+)
- J2-C. SUPPLY & OUTPUT (RTN)
- J2-D. SPARE
- J2-E. SPARE

NOTE:

1. RECOMMENDED MOUNTING HARDWARE #8 SCREW, #8 SPLIT LOCKWASHER AND # 8 FLAT WASHER.
TORQUE MAXIMUM 18 IN-LB.

TRANSDUCER SUPPLIED WITH MATING
CONNECTORS AND SOCKET CONTACTS.

AAC	Drawing Number 700-S657	Rev. L
------------	------------------------------------	-------------------