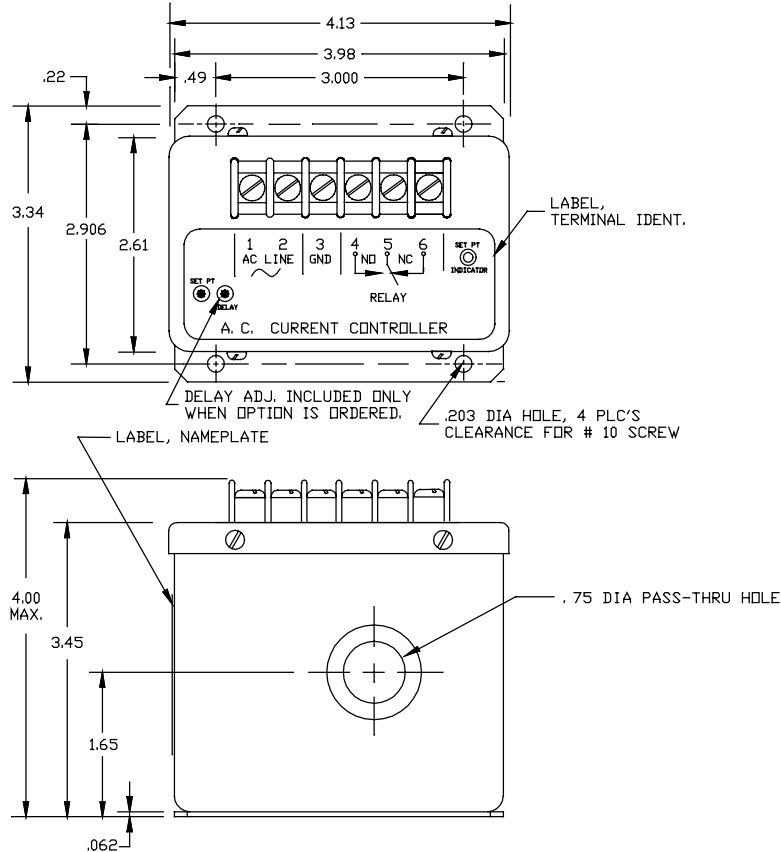


**AC CURRENT CONTROLLER
SERIES 871**



<u>PART NO.</u>	<u>RANGE AMPS AC</u>	<u>PART NO.</u>	<u>RANGE AMPS AC</u>
871-1	1	871-50	50
871-2	2	871-100	100
871-5	5	871-150	150
871-10	10	871-200	200
871-15	15	871-250	250
871-20	20	871-300	300

INPUT (LOAD CURRENT)

CURRENT RANGES (FULL SCALE) See Table Above
 FREQUENCY 47 to 400Hz
 OVERLOAD 250A for 100AMP FS & below
 500A FOR 150 AMP FS & above

OUTPUT

RELAY SPDT; Actuated at set point
 RELAY CONTACT RATINGS 10 AMPS @ 250 Vac or 24 Vdc
 * SET POINT Adjustable 20 to 100% FS
 SET POINT REPEATABILITY ±0.5% of range
 RESET Automatic when current falls 20% below set point
 SET POINT INDICATOR LIGHT On when current is at or above set point (Relay energized)
 RESPONSE 500 m-sec (typical)
 TIME DELAY (OPTIONAL) Adjustable 0.5 sec to 20 sec

* Set point normally at mid range when shipped from factory. User desired set point can be factory set upon request. Set point and time delay adjust - turn clockwise to increase.

SUPPLY (AC LINE)

VOLTAGE 115 Vac (105 min. - 130 max.) or
 220 Vac (200 min. - 260 max.) or
 440 Vac (390 min. - 490 max.)
 FREQUENCY RANGE 47 thru 400 Hz

ENVIRONMENTAL AND OTHER SPECIFICATIONS

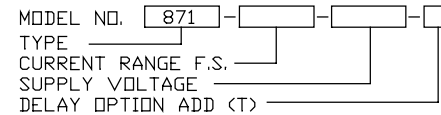
OPERATING TEMPERATURE RANGE -55°C to +85°C
 ISOLATION Input, Relay, Case
 DIELECTRIC STRENGTH 2000V RMS
 WEIGHT 2 lbs. max.

TERMINAL IDENTIFICATION

- 1-2 AC SUPPLY VOLTAGE
- 3 CASE GROUND
- 4-5-6 RELAY CONTACTS

NOTE: MOLDED TERMINAL BLOCK WITH 6-32 TERMINAL SCREWS, 7/16 IN. CENTER TO CENTER SPACING. ACCEPTS WIRE SIZES UP TO 12 AWG AND WIRE LUGS UP TO 5/16 IN.

HOW TO ORDER



AAC	Drawing Number 700-871	Rev. B
------------	-----------------------------------	-------------------