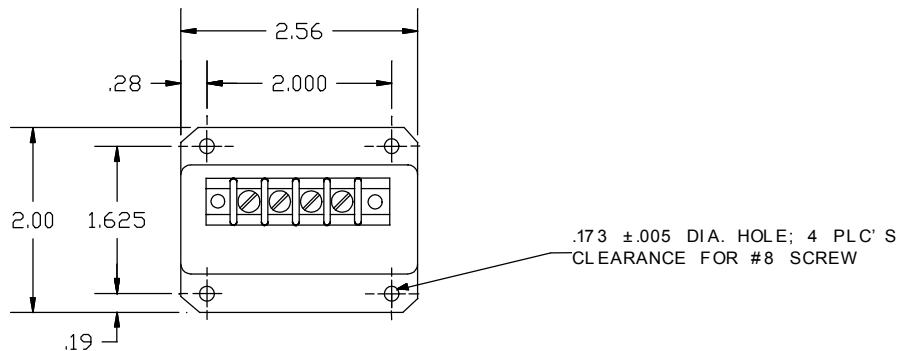
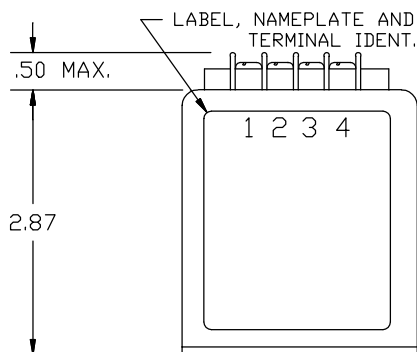


Dimensions in Inches, Tolerances: .XX ± .03 .XXX ± .010

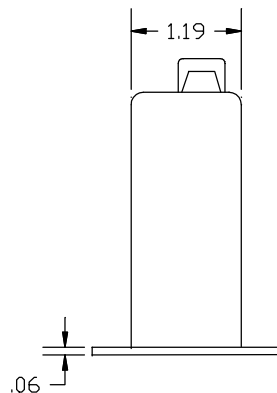
**A.C. VOLTAGE TRANSDUCER
SERIES 108X
4 TO 20mA 2 WIRE OPERATION**



.173 ± .005 DIA. HOLE; 4 PLC'S CLEARANCE FOR #8 SCREW



LABEL, NAMEPLATE AND TERMINAL IDENT.



<u>PART NO.</u>	<u>INPUT VOLTAGE RANGE Vac</u>	<u>CONTINUOUS OVERLOAD Vac</u>
108X-50	0 to 50	100
108X-130	0 to 130	180
108X-150	0 to 150	200
108X-270	0 to 270	380
108X-300	0 to 300	422
108X-500	0 to 500	700
108X-600	0 to 600	800

INPUT

VOLTAGE RANGE	See Table
FREQUENCY	60Hz (Optional Models Available) *
FREQUENCY RANGE	57 to 63Hz
BURDEN	3mA max.
OVERLOAD Vac	See Table

OUTPUT

CURRENT SIGNAL (2 WIRE OPERATION)	4 to 20mA dc FS (Full Scale)
CURRENT SIGNAL @ OVERLOAD	30mA typical
ACCURACY	±0.5% FS (±0.1mA)
RIPPLE (RMS)	0.5% FS (±0.1mA RMS)
RESPONSE (0 to 90%)	300 m-sec max.
TEMPERATURE COEFFICIENT	±0.020% FS/°C max.
LOAD RESISTANCE (RL)	250 Ohms nominal
LOAD RESISTANCE RANGE	0 to 1100 Ohms (See Table II)
PROTECTION	Reverse Polarity Protected

POWER SUPPLY (PS)

SUPPLY VOLTAGE	15Vdc nominal
CURRENT DRAIN	20mA
SUPPLY VOLTAGE RANGE	10 to 35Vdc (See Table II)

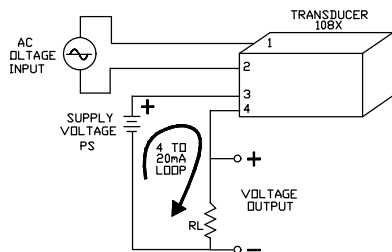
ENVIRONMENTAL AND PHYSICAL CHARACTERISTICS

OPERATING TEMPERATURE RANGE	- 20° C to +70° C
STORAGE TEMPERATURE RANGE	- 55° C to +85° C
INSULATION RESISTANCE	200 M-Ohms (all terminals to case)
DIELECTRIC STRENGTH	1000V RMS
WEIGHT	10 oz. max.

TERMINAL IDENTIFICATION

1. AC VOLTAGE INPUT
2. AC VOLTAGE INPUT
3. OUTPUT (+)
4. OUTPUT (RTN)

TERMINAL SCREWS 5-40
3/8 CENTER TO CENTER
WIRE SIZES TO 14 AWG
WIRE LUGS TO .281 WIDE.



**TABLE II
SUPPLY (PS) VS LOAD RESISTANCE (RL)**

<u>SUPPLY</u>	<u>LOAD RESISTANCE</u>
15 Vdc	0 to 250 Ohms
20Vdc	0 to 500 Ohms
25Vdc	0 to 750 Ohms
30Vdc	0 to 1000 Ohms
32Vdc	0 to 1100 Ohms

*** Optional Models**

ADD SUFFIX -50 TO MODEL NO. FOR 50Hz OPERATION
ADD SUFFIX -400 TO MODEL NO. FOR 400Hz OPERATION.
ADD SUFFIX -4000 TO MODEL NO. FOR 4000Hz OPERATION.

AAC	Drawing Number 700-108X	Rev. F
------------	------------------------------------	-------------------