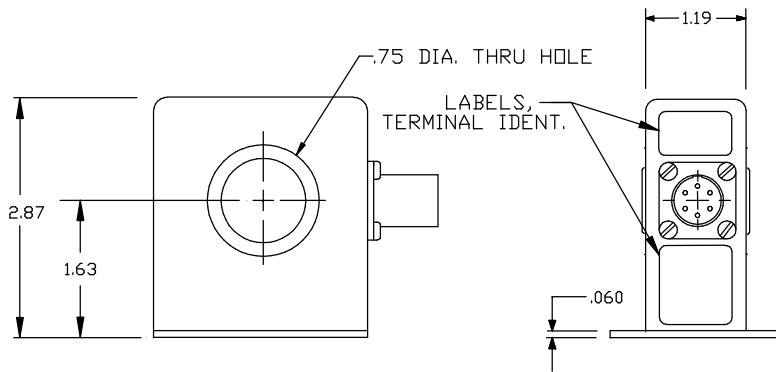
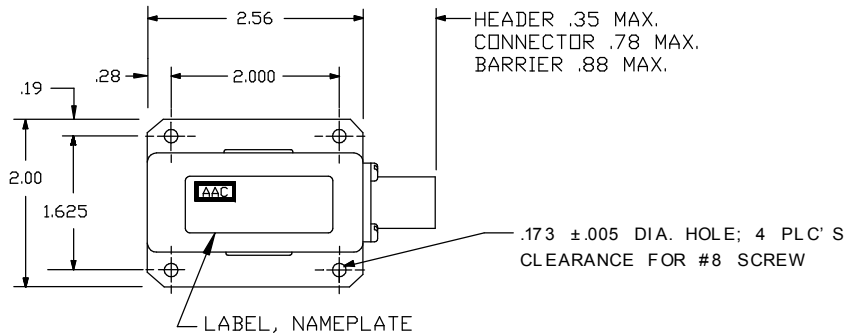


Dimensions in Inches, Tolerances: .XX ± .03 .XXX ± .010

**AC RMS CURRENT SENSOR
SERIES S402**

.173 DIA. HOLE; 4 PLC' S CLEARANCE FOR #8 SCREW



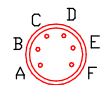
<u>PART NO.</u>	<u>INPUT CURRENT RANGE A RMS</u>	<u>PART NO.</u>	<u>INPUT CURRENT RANGE A RMS</u>
S402-250mA	0 TO 250mA	S402-10	0 TO 10A
S402-500mA	0 TO 500mA	S402-20	0 TO 20A
S402-1	0 TO 1A	S402-50	0 TO 50A
S402-2	0 TO 2A	S402-100	0 TO 100A
S402-3	0 TO 3A	S402-150	0 TO 150A
S402-5	0 TO 5A	S402-200	0 TO 200A
		S402-250	0 TO 250A

INPUT
 RANGE See Table
 FREQUENCY RANGE 57 to 63Hz (50 & 400Hz model available)
 OVERLOAD 200A continuously

OUTPUT
 VOLTAGE SIGNAL 0 to 5Vdc FS (Full Scale)
 ACCURACY ±.5% FS (±25mV)
 RESPONSE (0 to 90%) 100 m-sec
 RIPPLE 10mV RMS max.
 TEMPERATURE COEFFICIENT ± .02% FS/°C max.
 OUTPUT IMPEDANCE 1000 Ohms ±5%
 OUTPUT PROTECTION Output terminals E & C will withstand 32Vdc or short circuit continuously

POWER SUPPLY
 SUPPLY VOLTAGE 28Vdc ±4Vdc
 CURRENT DRAIN 100mA max.
 OVER VOLTAGE PROTECTION Terminals A & B withstand ±35Vdc without damage
 REVERSE POLARITY PROTECTION 10µA max current drain without damage.

ENVIRONMENTAL AND PHYSICAL CHARACTERISTICS
 OPERATING TEMPERATURE RANGE -0°C to +70°C
 STORAGE TEMPERATURE RANGE -25°C to +85°C
 DIELECTRIC STRENGTH 350V RMS (all terminals to case)
 INSULATION RESISTANCE 100M-Ohms (all terminals to case)
 ALTITUDE Operating: sea level to 60,000 ft.
 VIBRATION Operating: 0.06 in. D.A., 10 to 55 Hz (Method 201 of MIL-STD-202)
 SHOCK Operating: 50g, 11 m-sec half sine pulse Method 213, Condition A of MIL-STD-202.
 MOISTURE RESISTANCE Will meet Method 106 of MIL-STD-202 and Method 507.1 Proc. 1 of MIL-STD-810.
 OPERATING HUMIDITY 0% to 95% RH
 ATTITUDE Unit will perform as specified when mounted in any position.
 WEIGHT 1.25 lbs. max.

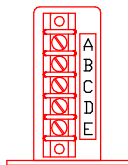


**SOLDER
HEADER**



**CONNECTOR
OPTION**
 ADD "-C" TO
PART NO.
CONNECTOR P/N
PT02E-10-6P-023
OR EQUIV.

MATING CONNECTOR
PT06A-10-6S-424



BARRIER OPTION
 ADD "-B" TO
PART NO.
BARRIER DETAILS
SEE DWG. 700-702

TERMINAL IDENTIFICATION

- A. SUPPLY VOLTAGE (+)
- B. SUPPLY VOLTAGE (RTN)
- C. OUTPUT (RTN)
- D. SPARE
- E. OUTPUT (+)
- F. SPARE

AAC	Drawing Number 700-S402-1004	Rev. D
------------	---	-------------------