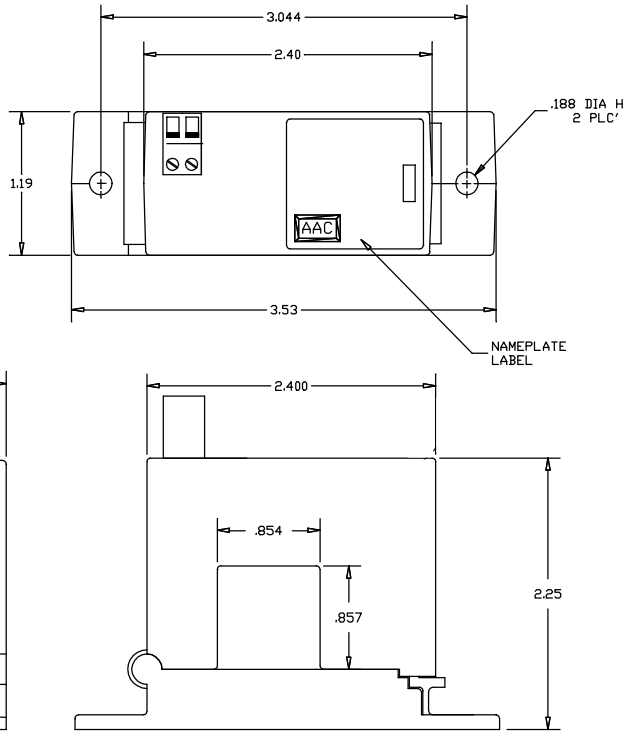


Dimensions in Inches, Tolerances: .XX ± .03 .XXX ± .010

**AC CURRENT TRANSDUCER
SPLIT CORE
RMS RESPONDING**

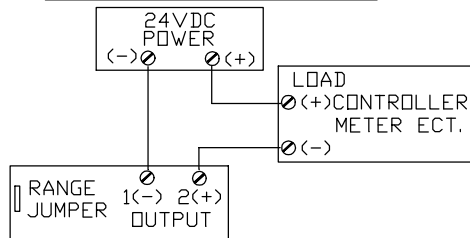


MODEL	RANGE	CONTINUOUS	MAXIMUM	
			6 SEC.	1 SEC.
ACTS-20-05	2A	80A	125A	250A
	5A	100A	125A	250A
ACTS-20-50	10A	80A	125A	250A
	20A	110A	150A	300A
	50A	175A	215A	400A
ACTS-20-200	100A	200A	300A	600A
	150A	300A	450A	800A
	200A	400A	500A	1000A

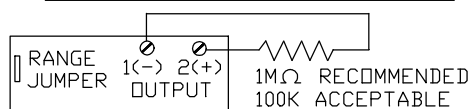
SPECIFICATIONS

Output Signal	4-20mA, Loop-powered, True RMS
Output Limit	23mA
Accuracy	.8% FS
Response Time	600mS (to 90% step change)
Frequency Range	10-400Hz
Power Supply	24VDC Nominal, 40VDC Maximum
Isolation Voltage	Tested to 5,000VAC
Input Ranges	Field selectable ranges from 0-200A. Consult factory for custom ranges.
Sensing Aperture	0.85" (21.5mm) sq.
Case	UL 94V-0 Flammability rated
Environmental	-4 to 122° F (-20 to 50° C), 0-95% RH, non-condensing

CONNECTIONS 4-20mA OPTION

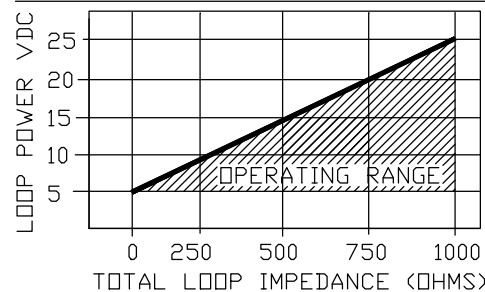


CONNECTIONS 0 TO 5/10VDC OPTION



NOTE: CONNECTIONS CAPTIVE SCREW,
12-22 AWG SOLID OR STRANDED,
OBSERVE POLARITY.

POWER SUPPLY (4-20mA OUTPUT ONLY)



HOW TO ORDER

ACTS-

RANGE	OUTPUT
-05	0 TO 2 OR 5A
-50	0 TO 10, 20, OR 50A
-200	0 TO 100, 150, OR 200A
-05	0 TO 5VDC
-10	0 TO 10VDC
-20	4 TO 20mA

AAC

**Drawing Number
700-ACTS**

**Rev.
D**