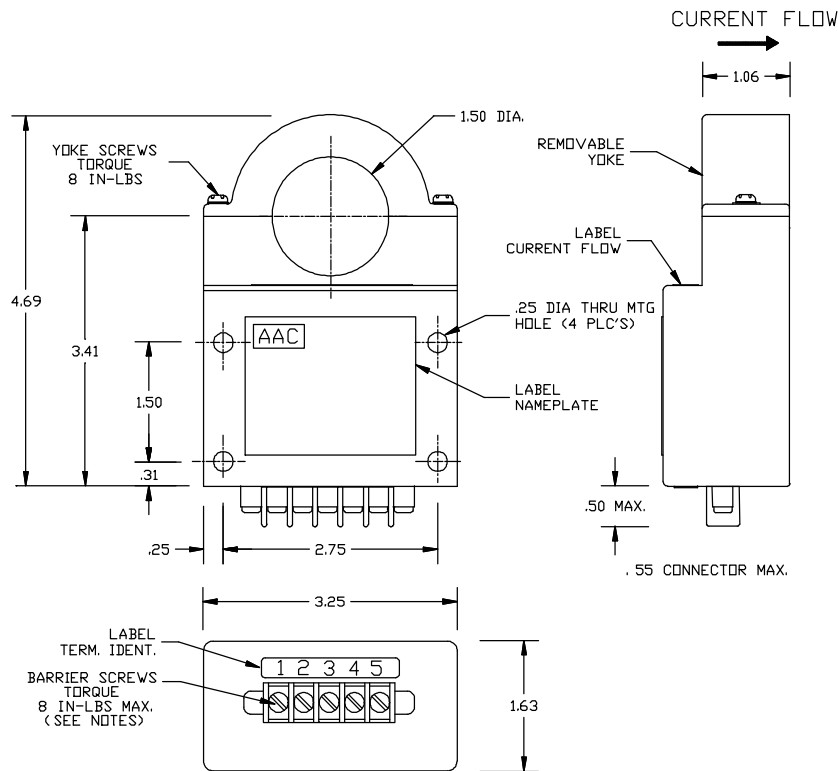


Dimensions in Inches, Tolerances: .XX ± .03 .XXX ± .010

**DC CURRENT TRANSDUCER  
SERIES S465  
REMOVABLE YOKE TYPE**



<u>PART NO.</u>	<u>INPUT RANGE</u>	<u>PART NO.</u>	<u>INPUT RANGE</u>
S465-150.....	0 to 150Adc	S465-1000.....	0 to 1000Adc
S465-250.....	0 to 250Adc	S465-1500.....	0 to 1500Adc
S465-500.....	0 to 500Adc	S465-2000.....	0 to 2000Adc
S465-750.....	0 to 750Adc	S465-2500.....	0 to 2500Adc

**INPUT**  
 RANGE ..... Adc See Table  
 OVERLOAD CONTINUOUS..... Unlimited (Nondestructive Nonlatching/ Saturated Output)

**OUTPUT**  
 CURRENT SIGNAL..... 4 to 20mAdc FS (Full Scale)  
 ACCURACY ..... ± 1% FS or ±0.2mA max.  
 TEMPERATURE COEFFICIENT..... ± 0.033% FS / °C max.  
 RESPONSE (10 to 90%)..... 200uS max.  
 LOAD RESISTANCE ..... 250 Ohms Nominal  
 LOAD RESISTANCE RANGE ..... 0 to 300 Ohms  
 CURRENT SIGNAL @ OVERLOAD..... 24mA TYP.

**POWER SUPPLY (PS)**  
 SUPPLY VOLTAGE ..... 16 to 26Vdc  
 CURRENT DRAIN..... 24mA  
 PROTECTION..... Reverse Polarity Protected

**ENVIRONMENTAL AND PHYSICAL CHARACTERISTICS**  
 OPERATING TEMPERATURE RANGE -40° to +85°C  
 STORAGE TEMPERATURE RANGE ... -45° to +85°C  
 ISOLATION ..... Input/Output/Case  
 INSULATION RESISTANCE ..... 200 M-Ohms @ 500Vdc  
 INPUT CONDUCTOR VOLTAGE..... 1.5KV max. (5KV max. with insulated cable)  
 CASE ..... Molded Plastic (GE Lexan) Meets UL Flammability Rating 94  
 WEIGHT ..... 18 oz. Max.

**NOTE:** HOUSING AND POT HOLES SEALED MAKING TRANSDUCER WATER SPRAY RESISTANT. END USER MUST COAT TERMINAL BLOCK WITH SILICONE TO PREVENT CORROSION.

**NOTE:**

1. NORMALLY SUPPLIED WITH 5 PIN TERMINAL BARRIER STRIP. MOLDED TERMINAL BLOCK WITH 6-32 TERMINAL SCREWS, .325 IN. CENTER TO CENTER SPACING. ACCEPTS WIRE SIZES UP TO 16AWG AND WIRE LUGS TO .250 IN. WIDE. AVAILABLE WITH 6 PIN OPTIONAL CONNECTOR MS3112E-10-6P OR EQUIVALENT. ADD LETTER C AFTER PART NUMBER FOR CONNECTOR OPTION.



**TERMINAL IDENTIFICATION**

<u>BARRIER</u>		<u>CONNECTOR</u>
1	OUTPUT (+)	A
2	OUTPUT (RTN)	B
3	SUPPLY VOLTAGE (+)	C
4	SUPPLY VOLTAGE (RTN)	D
5	SPARE	E
	SPARE	F

<b>AAC</b>	<b>Drawing Number</b>	<b>Rev.</b>
	<b>700-S465-909</b>	<b>J</b>