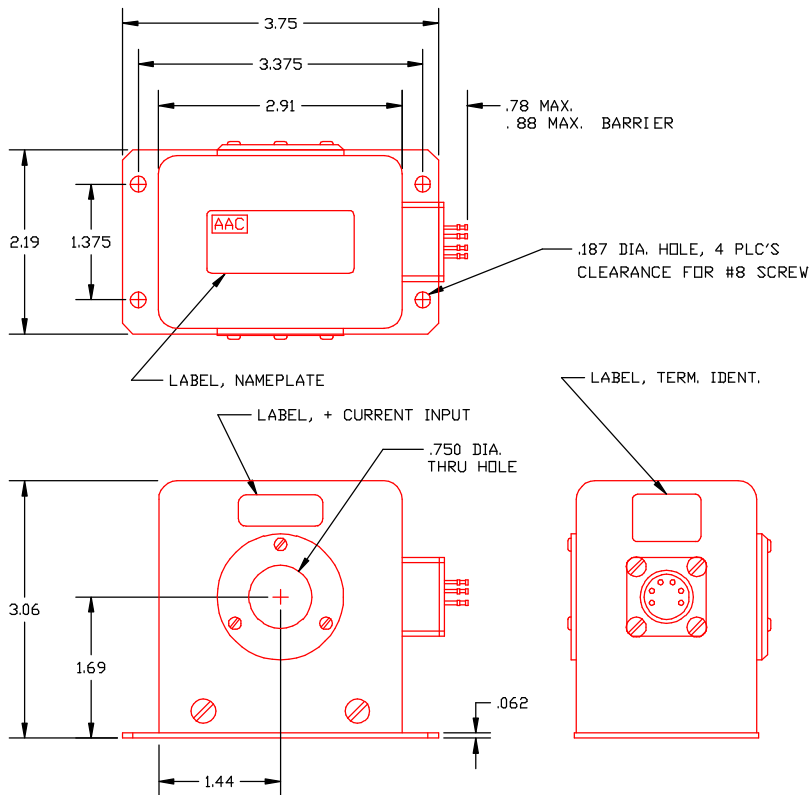


Dimensions in Inches, Tolerances: .XX ± .03 .XXX ± .010

**DC CURRENT SENSOR
SERIES 936**



<u>PART NO.</u>	<u>INPUT CURRENT AMPS DC</u>	<u>PART NO.</u>	<u>INPUT CURRENT AMPS DC</u>
936-10	0 TO 10mA	936-250	0 TO 250mA
936-20	0 TO 20mA	936-500	0 TO 500mA
936-50	0 TO 50mA	936-1A	0 TO 1A
936-100	0 TO 100mA	936-2A	0 TO 2A
936-200	0 TO 200mA	936-5A	0 TO 5A

INPUT

CURRENT RANGE (Adc)	See Table
TRANSIENT PROTECTION	
VOLTAGE OF THRU CABLE	35KV (with insulated cable)
VOLTAGE TRANSIENT	500 Volts/u-sec
CURRENT TRANSIENT	500 Amps/u-sec
REFLECTED RIPPLE (THRU CABLE)	40mV

OUTPUT

VOLTAGE SIGNAL	0 to +5Vdc FS (Full Scale)
ACCURACY	±1% FS (±50mV)
RESPONSE (10 TO 90%)	100 m-sec. max.
RIPPLE	2% FS RMS max.
TEMPERATURE COEFFICIENT	± 0.1% FS/°C max.
OUTPUT IMPEDANCE (±5%)	1000 Ohms (Ranges 10mA to 1A) 500 Ohms (Range 2A) 200 Ohms (Range 5A)

POWER SUPPLY

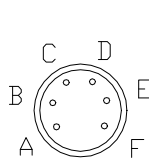
SUPPLY VOLTAGE	28Vdc ±4Vdc
CURRENT DRAIN	75mAdc max.

ENVIRONMENTAL AND PHYSICAL CHARACTERISTICS

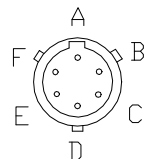
OPERATING TEMPERATURE RANGE	-55°C to +85°C
STORAGE TEMPERATURE RANGE	-55°C to +100°C
INSULATION RESISTANCE	100 K-Ohms
WEIGHT	28 oz. max.

TERMINAL IDENTIFICATION

- A. SUPPLY VOLTAGE (+)
- B. SUPPLY VOLTAGE (RTN)
- C. OUTPUT (RTN)
- D. SPARE
- E. OUTPUT (+)
- F. CASE GROUND



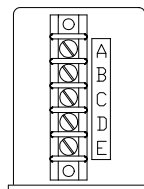
SOLDER
HEADER



CONNECTOR

ADD "-C" TO
PART NO.

CONNECTOR
PT02E-10-6P-(023)
OR EQUIV.



BARRIER OPTION

ADD "-B" TO
PART NO.

AAC	Drawing Number 700-936	Rev. J
------------	-----------------------------------	-------------------