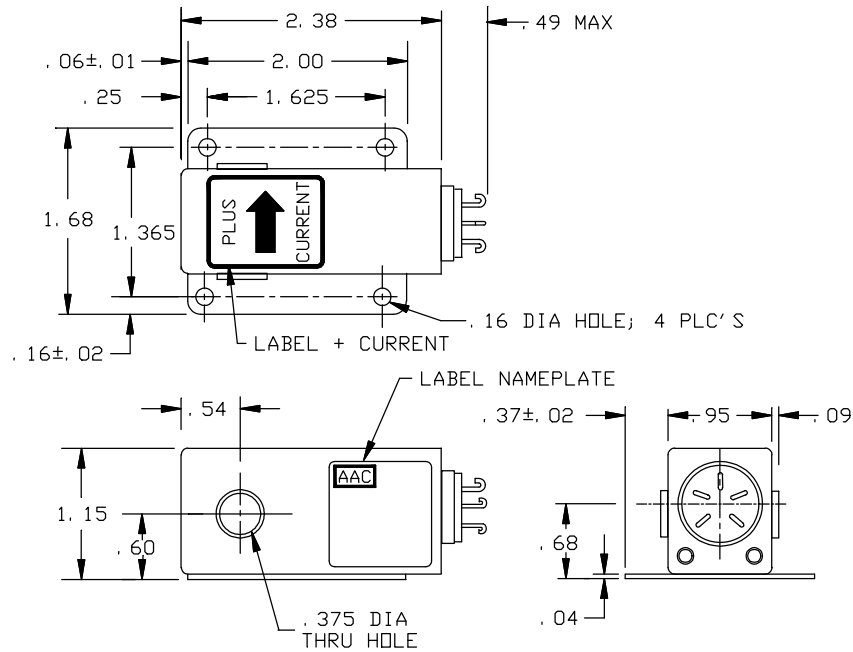


**BIDIRECTIONAL CURRENT TRANSDUCER  
SERIES S745**



PART NO.	INPUT RANGE	ACCURACY	RESPONSE		TEMP. COEFF.
			TIME	BANDWIDTH	
S745-40	0 to ±40 Adc	±1	2u-sec	175Khz	.05%
S745-75	0 to ±75 Adc	±0.75	1.5u-sec	233Khz	.04%
S745-150	0 to ±150 Adc	±0.5	1.0u-sec	350Khz	.03%
S745-250	0 to ±250 Adc	±0.5	1.0u-sec	350Khz	.03%

**INPUT CURRENT**

RANGE NOMINAL	See Table
OVERLOAD	Unlimited (Nondestructive Nonlatching Saturated output)
FREQUENCY RANGE	DC to 2KHz

**OUTPUT**

VOLTAGE SIGNAL	0 to ±5Vdc (Full Scale)
ACCURACY (ROOM TEMP)	% FS see table
TEMPERATURE COEFFICIENT	Per °C max. see table
OUTPUT IMPEDANCE	10 Ohms max.
RESPONSE TIME (10 TO 90%)	Max. see table
BANDWIDTH	DC to see table
OUTPUT PROTECTION	Short Circuit
OUTPUT LOAD	5K Ohm min.

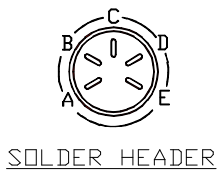
**POWER SUPPLY**

SUPPLY VOLTAGE	±12Vdc (±1Vdc)
CURRENT DRAIN	+15mA max -5mA max.
PROTECTION	Reverse Polarity Protected

**ENVIRONMENTAL AND PHYSICAL CHARACTERISTICS**

OPERATING TEMPERATURE	-55 to +100°C
STORAGE TEMPERATURE	-55°C to +100 °C
RADIATION	Operating as specified with a total dose of 1 KRAD (SI). SEL of 37 MeV (no latch or up-set).
SHOCK	100 g, 6 m-sec half sine pulse
VIBRATION	50g
HUMIDITY	0 to 100% RH Operating
INSULATION RESISTANCE	500M-Ohms @ 500Vdc
DIELECTRIC STRENGTH	1500Vdc
FINISH	Fuse Tin Plate
WEIGHT	0.49 lbs. Max.

**TERMINAL IDENTIFICATION**



- A. SUPPLY (+)
- B. SUPPLY (RTN)
- C. SUPPLY (-)
- D. OUTPUT (+)
- E. OUTPUT (RTN)

<b>AAC</b>	Drawing Number <b>700-S745</b>	Rev. <b>B</b>
------------	-----------------------------------	------------------