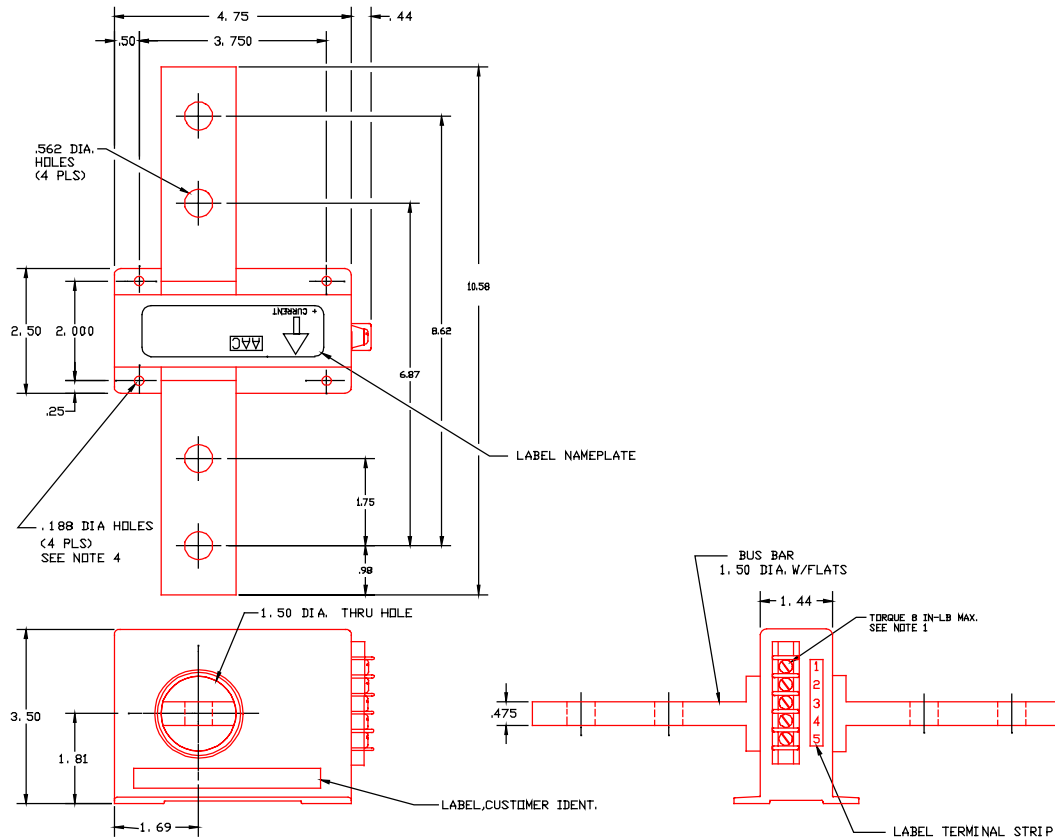


Dimensions in Inches, Tolerances: .XX ± .03 .XXX ± .010



**BIDIRECTIONAL CURRENT TRANSDUCER  
PART NUMBER S630-2500**

**INPUT**

MEASURING RANGE (CONTINUOUS)	0 to ± 1000Adc FS (Full Scale)
(TRANSIENT) ....	1422A RMS (1 min) 1375A RMS (4 min) 1161A RMS (30 min) 2168A peak (5 sec.) 2514A tr (18 M-sec.)

**OUTPUT**

CURRENT SIGNAL .....	250uA per 1A Input
TURN RATIO .....	4000 to 1
ACCURACY .....	0.5% FS (-25 to +70°C)
LINEARITY .....	± 0.1% max. up to 630mA max.
LOAD .....	5.5 Ohms max.
RESPONSE .....	1M-sec. max.

**POWER SUPPLY**

SUPPLY VOLTAGE .....	±24Vdc ±1Vdc
CURRENT DRAIN .....	650mA max.
PROTECTION.....	Reverse Polarity Protected

**ENVIRONMENTAL AND PHYSICAL CHARACTERISTICS**

OPERATING TEMPERATURE .....	-25°C to +75°C
STORAGE TEMPERATURE .....	-40°C to +85°C
SHOCK & VIBRATION .....	IAW ADTRANZ Doc. ABB-ES-091291-1
OPERATING HUMIDITY .....	0 to 95% Relative Humidity
INSULATION RESISTANCE .....	200 M-ohms @ 500Vdc
DIELECTRIC STRENGTH .....	3.3Kv RMS 60Hz
PRIMARY BAR VOLTAGE .....	2Kv RMS max.
CASE .....	Moulded Plastic (GE Lexan) Meets UL Flammability Rating 94 V-0
WEIGHT .....	6.5 lbs. max.

**NOTE:**

1. MOULDED TERMINAL BLOCK WITH 5-40 TERMINAL SCREWS, 3/8 IN. CENTER TO CENTER SPACING. ACCEPTS WIRE SIZES TO 14 AWG AND WIRE LUGS UP TO 9/32 IN. WIDE. TORQUE 8 IN-LB MAX.
2. PART TO BE IDENTIFIED WITH ADTRANZ PART NUMBER & REVISION LEVEL IN ACCORDANCE WITH SAE AS478-30, LATEST REVISION. CHARACTER HEIGHT SHALL BE .50 INCH MAX. APPROX. WHERE SHOWN.
3. REFERENCE DOCUMENT NO. E301-005.RFP (XIL).
4. RECOMMENDED MOUNTING HARDWARE #8 SCREW, #8 SPLIT LOCKWASHER AND #8 FLAT WASHER. TORQUE MAXIMUM 18 IN-LB.

**TERMINAL IDENTIFICATION**

1. SUPPLY VOLTAGE (+)
2. SUPPLY VOLTAGE (-)
3. OUTPUT
4. SPARE
5. SPARE

<b>AAC</b>	<b>Drawing Number 700-S630</b>	<b>Rev. E</b>
------------	------------------------------------	-------------------