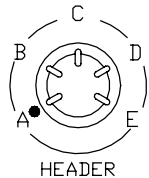
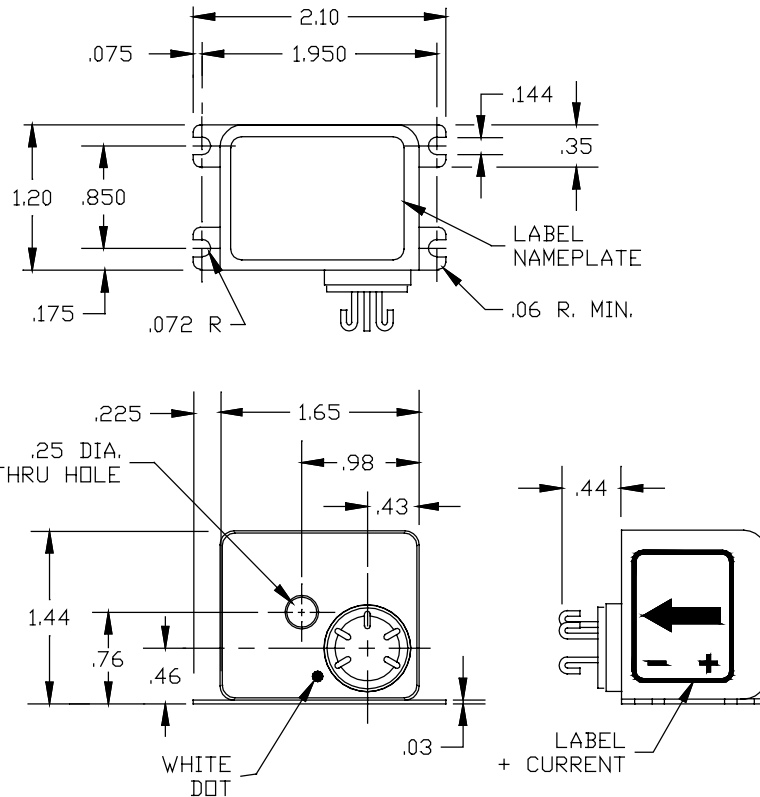


Dimensions in Inches, Tolerances: .XX ± .03 .XXX ± .010

**BIDIRECTIONAL CURRENT TRANSDUCER
SERIES S449**



TERMINAL IDENTIFICATION

- A. SUPPLY VOLTAGE (+)
- B. SUPPLY VOLTAGE (-)
- C. SUPPLY (RTN)
- D. OUTPUT (RTN)
- E. OUTPUT (+)

<u>PART NO.</u>	<u>INPUT CURRENT</u>	<u>ACCURACY</u>	<u>TEMPERATURE COEFFICIENT</u>
S449-25	0 to ±25	±1.0%	±0.05%
S449-40	0 to ±40	±0.5%	±0.03%
S449-50	0 to ±50	±0.5%	±0.025%
S449-60	0 to ±60	±0.5%	±0.025%

INPUT

CURRENT RANGE Adc or ac peak See Table
 FREQUENCY RANGE DC to 2KHz continuous operation
 CURRENT OVERLOAD Unlimited (Nondestructive Nonlatching/Saturated Output)

OUTPUT

VOLTAGE SIGNAL 0 to ±5.0Vdc FS (Full Scale)
 ACCURACY See Table
 OUTPUT IMPEDANCE 400 Ohms max.
 RESPONSE (10 to 90%) 1u-sec max.
 BANDWIDTH DC to 100KHz
 TEMPERATURE COEFFICIENT FS/°C max. See Table
 OUTPUT NOISE 10mV RMS max.
 LINEAR OVER RANGE 10% above FS

POWER SUPPLY

SUPPLY VOLTAGE ±15Vdc ±250mV
 CURRENT DRAIN ±40mA max.
 MAX. OVER VOLTAGE ±17Vdc continuous (Nondestructive)
 REVERSE POLARITY 10µA drain (Nondestructive)

ENVIRONMENTAL AND PHYSICAL CHARACTERISTICS

OPERATING TEMPERATURE (TC) -40° to +71°C
 STORAGE TEMPERATURE -55° to +125°C
 ISOLATION : INPUT/OUTPUT/CASE 1050V RMS max.
 INSULATION RESISTANCE 200M-Ohms @ 500Vdc
 CASE Hermetic seal
 FINISH Fuse Tin Plate
 WEIGHT 4 oz. max.

AAC	Drawing Number 700-S449	Rev. D
------------	------------------------------------	-------------------