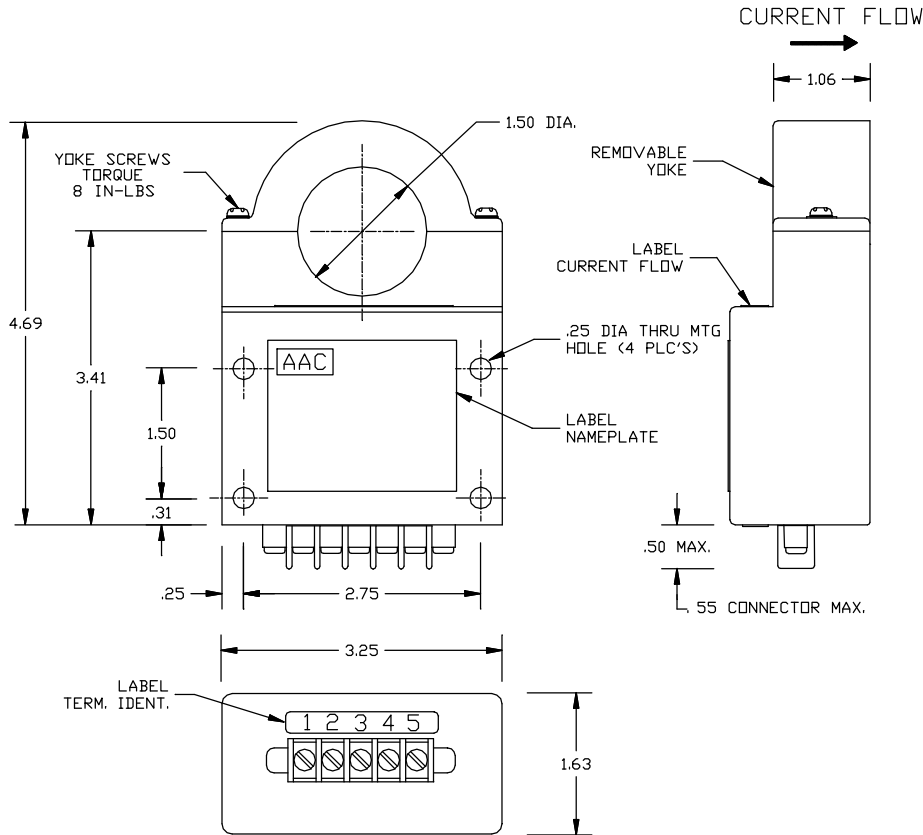


Dimensions in Inches, Tolerances: .XX ± .03 .XXX ± .010

**BIDIRECTIONAL CURRENT TRANSDUCER
SERIES 9000
REMOVABLE YOKE TYPE**



<u>PART NO.</u>	<u>INPUT RANGE</u>	<u>PART NO.</u>	<u>INPUT RANGE</u>
9000-150	0 to ±150	9000-1000	0 to ±1000
9000-250	0 to ±250	9000-1500	0 to ±1500
9000-500	0 to ±500	9000-2000	0 to ±2000
9000-750	0 to ±750	9000-2500	0 to ±2500

INPUT

CURRENT RANGE See Table
CURRENT OVERLOAD Unlimited Nondestructive

OUTPUT

VOLTAGE SIGNAL 0 to ±5Vdc FS (Full Scale)
ACCURACY ±1% FS
RESPONSE (10 to 90%) 200 u-sec max.
OUTPUT IMPEDANCE 100Ω max.
TEMPERATURE COEFFICIENT ±0.05% FS/°C typ
SHORT CIRCUIT DURATION Continuous

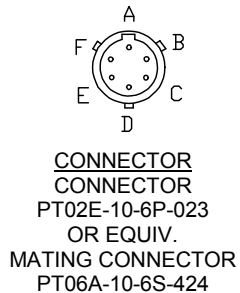
POWER SUPPLY

SUPPLY VOLTAGE ±15Vdc ±1Vdc
CURRENT DRAIN 100mA max. at +15Vdc
25mA max. at -15Vdc
REVERSE POLARITY No damage, 10uA current drain

ENVIRONMENTAL AND PHYSICAL CHARACTERISTICS

OPERATING TEMPERATURE RANGE -25° to +75°C
STORAGE TEMPERATURE RANGE -55° to +85°C
ISOLATION Input/Output/Case (Supply & Output Common)
CASE MATERIAL Molded Plastic Meets UL Flammability Rating 94V-0
WEIGHT 12 oz. max.

TERMINAL IDENTIFICATION



<u>BARRIER</u>		<u>CONNECTOR</u>
1	OUTPUT (+)	A
2	OUTPUT (RTN)	B
3	SUPPLY VOLTAGE (+15V)	C
4	SUPPLY VOLTAGE (RTN)	D
5	SUPPLY VOLTAGE (-15)	E
	SPARE	F

NOTE:

1. NORMALLY SUPPLIED WITH 5 PIN TERMINAL BARRIER STRIP. MOLDED TERMINAL BLOCK WITH 6-32 TERMINAL SCREWS, .325 IN. CENTER TO CENTER SPACING. ACCEPTS WIRE SIZES UP TO 16AWG AND WIRE LUGS TO .250 IN. WIDE. AVAILABLE WITH 6 PIN OPTIONAL CONNECTOR MS3112E-10-6P OR EQUIVALENT. ADD LETTER -C AFTER PART NUMBER FOR CONNECTOR OPTION.

AAC	Drawing Number 700-9000	Rev. E
------------	------------------------------------	-------------------