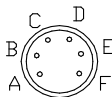
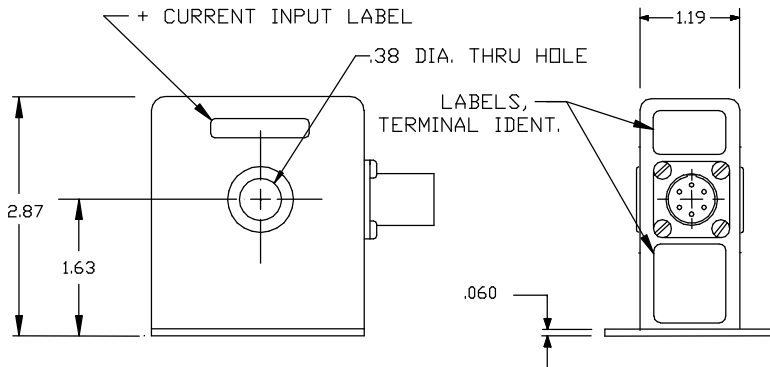
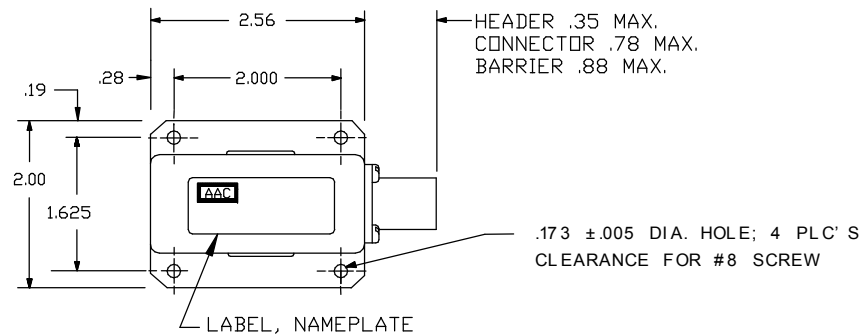
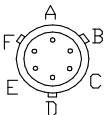


Dimensions in Inches, Tolerances: .XX ± .03 .XXX ± .010

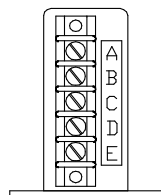
**DC CURRENT SENSOR  
SERIES 903B**



**SOLDER  
HEADER**



**CONNECTOR  
OPTION**



**BARRIER  
OPTION**

ADD "-C" TO  
PART NO.  
CONNECTOR P/N  
MS3112E-10-6P OR  
PT02E-10-6P-023  
OR EQUIV.  
MATING CONNECTOR  
MS3116F-10-6S OR  
EQUIV.

ADD "-B" TO  
PART NO.  
BARRIER DETAILS  
SEE DWG. 700-701

<u>PART NO.</u>	<u>INPUT CURRENT RANGE</u>	<u>PART NO.</u>	<u>INPUT CURRENT RANGE</u>
903B-5.....	0-5mA	903B-250.....	0-250mA
903B-10.....	0-10mA	903B-500.....	0-500mA
903B-20.....	0-20mA	903B-1A.....	0-1A
903B-50.....	0-50mA	903B-1.5A.....	0-1.5A
903B-100.....	0-100mA	903B-2A.....	0-2A
903B-200.....	0-200mA	903B-5A.....	0-5A

**OUTPUT**

VOLTAGE SIGNAL.....	0 to +5Vdc FS (Full Scale)
ACCURACY.....	±1% FS (±50mV)
RIPPLE.....	2% FS RMS max.
IMPEDANCE.....	1000 Ohms ±5%, 5mA to 1A range 500 Ohms ±5%, 2A 200 Ohms ±5%, 5A
RESPONSE.....	50 m-sec. max. ( 10 to 90%)
TEMPERATURE COEFFICIENT.....	±.04% FS/°C max.

**POWER SUPPLY**

SUPPLY VOLTAGE.....	28Vdc ±4Vdc
CURRENT DRAIN.....	50mAdc max.
REVERSE POLARITY PROTECTION.....	10µA current drain without damage

**ENVIRONMENTAL AND PHYSICAL CHARACTERISTICS**

OPERATING TEMPERATURE RANGE.....	-55°C to +85°C
STORAGE TEMPERATURE RANGE.....	-60°C to +100°C
INSULATION RESISTANCE.....	100 M-ohms (all terminals to case)
DIELECTRIC STRENGTH.....	350V RMS (all terminals to case)
ALTITUDE.....	Operating sea level to 60,000 ft.
VIBRATION.....	Operating - 0.06 in. D.A., 10 to 55 Hz method 201 of MIL-STD-202
SHOCK.....	Operating 50 g, 11 m-sec half sine pulse method 213 Condition A of MIL-STD-202
MOISTURE RESISTANCE.....	Will meet method 106 of MIL-STD-202 and method 507.1 Proc. 1 of MIL-STD-810
OPERATING HUMIDITY.....	0% to 95% RH
ATTITUDE.....	Meets spec. for any mounting position
RIPPLE.....	40mV reflected onto pass-thru line
WEIGHT.....	1.25 lbs. max.

**TERMINAL IDENTIFICATION**

- A. SUPPLY VOLTAGE (+)
- B. SUPPLY AND SIGNAL (RTN)
- C. OUTPUT SIGNAL (+)
- D. SPARE
- E. SPARE
- F. CASE GROUND

<b>AAC</b>	<b>Drawing Number 700-903B</b>	<b>Rev. P</b>
------------	------------------------------------	-------------------