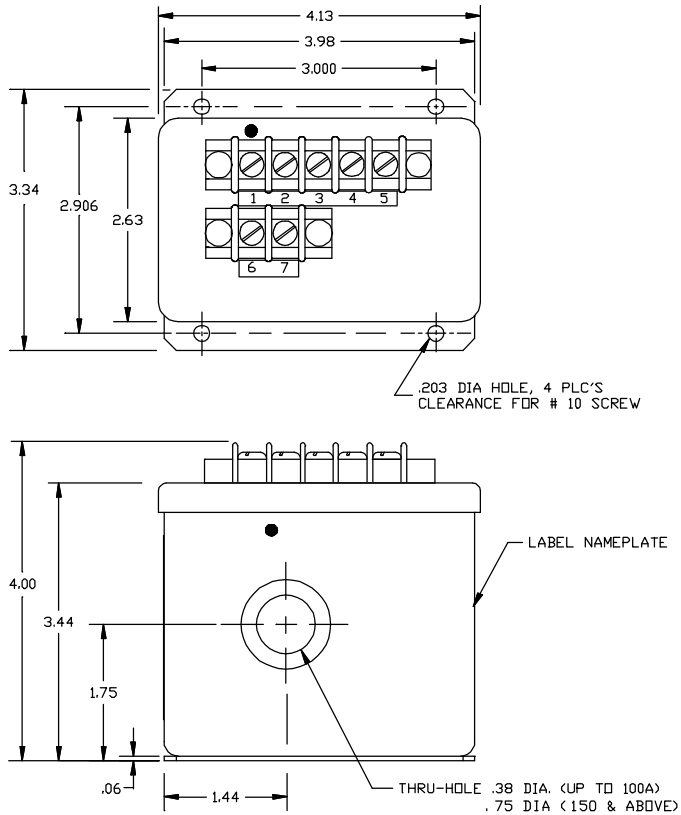


Dimensions in Inches, Tolerances: .XX ± .03 .XXX ± .010

AC WATT TRANSDUCER
SERIES S73



| PART FACTOR NUMBER | FULL SCALE (FS) POWER RANGE | CURRENT RANGE (ac) | VOLTAGE RANGE (ac) | SCALE Vdc/KW |
|--------------------|-----------------------------|--------------------|--------------------|--------------|
| S73-10-115 | 0-1KW | 0-10A | 0-150V | 3.000 |
| S73-25-115 | 0-2.5KW | 0-25A | 0-150V | 2.000 |
| S73-50-115 | 0-5KW | 0-50A | 0-150V | 1.000 |
| S73-100-115 | 0-10KW | 0-100A | 0-150V | 0.500 |
| S73-150-115 | 0-15KW | 0-150A | 0-150V | 0.333 |
| S73-200-115 | 0-20KW | 0-200A | 0-150V | 0.250 |
| S73-300-115 | 0-30KW | 0-300A | 0-150V | 0.167 |
| S73-500-115 | 0-50KW | 0-500A | 0-150V | 0.100 |
| S73-10-230 | 0-2KW | 0-10A | 0-300V | 2.500 |
| S73-25-230 | 0-5KW | 0-25A | 0-300V | 1.000 |
| S73-50-230 | 0-10KW | 0-50A | 0-300V | 0.500 |
| S73-100-230 | 0-20KW | 0-100A | 0-300V | 0.250 |
| S73-150-230 | 0-30KW | 0-150A | 0-300V | 0.167 |
| S73-200-230 | 0-40KW | 0-200A | 0-300V | 0.125 |
| S73-300-230 | 0-60KW | 0-300A | 0-300V | 0.083 |
| S73-500-230 | 0-100KW | 0-500A | 0-300V | 0.050 |

INPUT

| | |
|--------------------|-------------------------|
| POWER RANGE | See Table |
| FREQUENCY | 60Hz ±5% |
| BURDEN | 1VA typical |
| POWER FACTOR RANGE | 1 to zero (lead or lag) |

OUTPUT

| | |
|-------------------------|---------------------------|
| VOLTAGE SIGNAL | 0 to +5VdcFS (Full Scale) |
| ACCURACY | ±2% FS (±100mV) |
| RESPONSE | 400m-sec max. |
| RIPPLE (PEAK) | 2% FS max. |
| TEMPERATURE COEFFICIENT | ±0.15% FS/°C |
| OUTPUT IMPEDANCE | 2.5K-Ohms max. |
| P.F. PHASE ANGLE ERROR | ±3°, max. |

POWER SUPPLY

| | |
|----------------|---------------|
| SUPPLY VOLTAGE | 105 to 135Vac |
| FREQUENCY | 50/60/400Hz |
| BURDEN | 1VA typical |

ENVIRONMENTAL AND PHYSICAL CHARACTERISTICS

| | |
|-----------------------------|---------------------|
| OPERATING TEMPERATURE RANGE | -20° to +60°C |
| STORAGE TEMPERATURE RANGE | -40° to +85°C |
| DIELECTRIC STRENGTH | 1000Vac |
| INSULATION RESISTANCE | 200M-Ohms @ 500Vdc |
| ISOLATION | Input/Output/Supply |

TERMINAL IDENTIFICATION

1. LOAD POTENTIAL (HI)
2. LOAD POTENTIAL (LO)
3. CASE GROUND
4. OUTPUT (RTN)
5. OUTPUT (+)
6. SUPPLY VOLTAGE
7. SUPPLY VOLTAGE

| | | |
|------------|----------------|------|
| AAC | Drawing Number | Rev. |
| | 700-S73-413 | C |