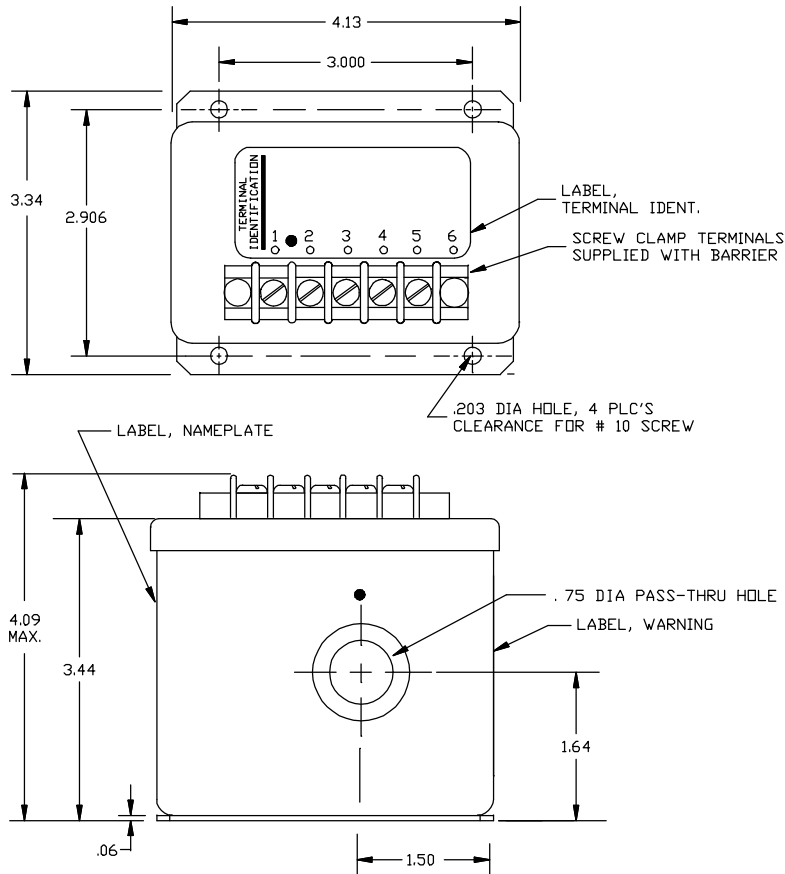


Dimensions in Inches, Tolerances: .XX ± .03 .XXX ± .010

**AC WATT TRANSDUCER
SERIES S217-413**



TERMINAL IDENTIFICATION

1. LOAD POTENTIAL (HI)
(440Vac OPERATION ONLY)
2. LOAD POTENTIAL (HI)
(220Vac OPERATION ONLY)
3. LOAD POTENTIAL (LO)
(220 OR 440Vac OPERATION)
4. OUTPUT (RTN)
5. OUTPUT (+)
6. CASE GROUND

PART NUMBER	MAX AMPS (RMS)	RANGE	
		V/KW	FACTOR
S217-10	10	0-2KW	2.5
S217-25	25	0-5KW	1.0
S217-50	50	0-10KW	0.50
S217-100	100	0-20KW	0.25
S217-150	150	0-25KW	0.20
S217-200	200	0-40KW	0.125

PART NUMBER	MAX AMPS (RMS)	RANGE	
		V/KW	FACTOR
S217-10	10	0-4KW	1.25
S217-25	25	0-10KW	0.50
S217-50	50	0-20KW	0.25
S217-100	100	0-40KW	0.125
S217-150	150	0-50KW	0.100
S217-200	200	0-80KW	0.0625

INPUT

POWER RANGE	KW See Table
CURRENT RANGE	Aac RMS See Table
NOMINAL INPUT VOLTAGE	User selects 220Vac to 440Vac
LOAD VOLTAGE RANGE	220Vac Nominal 160 to 300Vac 440Vac Nominal 320 to 480Vac
FREQUENCY	57 TO 63Hz
BURDEN	1VA typical
POWER FACTOR RANGE	1 to zero (lead or lag)

OUTPUT

VOLTAGE SIGNAL	0 to +5VdcFS (Full Scale)
ACCURACY	±2% FS (±100mV)
RESPONSE	400m-sec max.
RIPPLE (PEAK)	3% FS max.
P.F. PHASE ANGLE ERROR	±3°, max.
TEMPERATURE COEFFICIENT	±0.2% FS/°C
OUTPUT IMPEDANCE	2.5K-Ohms max.

ENVIRONMENTAL AND PHYSICAL CHARACTERISTICS

OPERATING TEMPERATURE RANGE	0° to +50°C
STORAGE TEMPERATURE RANGE	-55° to +125°C

AAC

**Drawing Number
700-S217-413**

**Rev.
G**