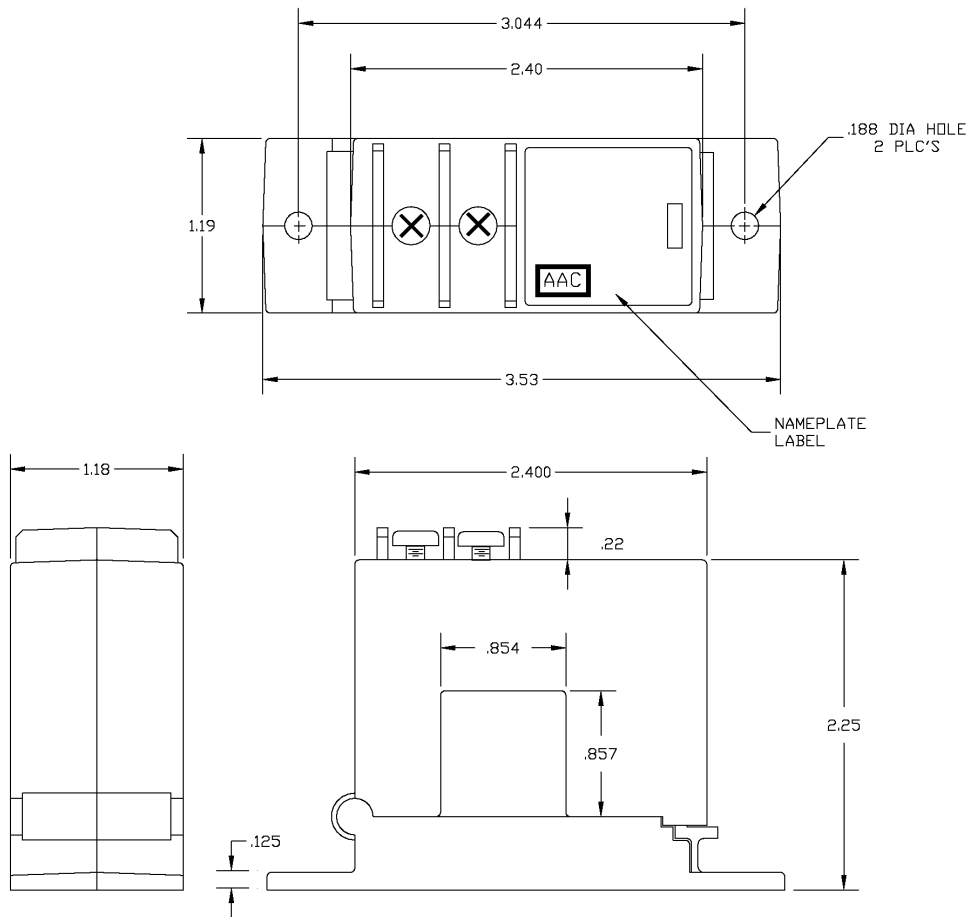


Dimensions in Inches, Tolerances: .XX ± .03 .XXX ± .010

**AC CURRENT OPERATED SWITCHES  
SPLIT CORE**



<u>AAC MODEL</u>	<u>RANGES</u>	<u>RANGE SELECT.</u>	<u>OUTPUT</u>
ACS-CAJ-200	1.5-6A 6-40A 40-200A	YES	NORMALLY CLOSED
ACS-OAJ-200	1.5-6A 6-40A 40-200A	YES	NORMALLY OPEN

**SPECIFICATIONS**

<b>Power Supply</b>	NONE--Self-powered			
<b>Output</b>	Isolated Solid State Switch			
<b>Output Rating</b>	1.0A @ 240VAC (Standard Units) 15A @ 120VDC, 10A @ 240VDC (-15 Option)			
<b>Off State Leakage</b>	NO: None NC: 2.5mA			
<b>Response Time</b>	0.04 to 0.120 Second			
<b>Set Point Range</b>	1.5-6, 6-40 & 40-200A			
<b>Hysteresis</b>	5% of Setpoint			
<b>Overload</b>	<b>Current</b>	<b>Continuous</b>	<b>6 Sec</b>	<b>1 Sec</b>
(1)	1-6A	150A	400A	600A
(2)	6-40A	150A	500A	800A
(3)	40-200A	210A	800A	1200A
<b>Isolation Voltage</b>	Tested to 5,000VAC			
<b>Frequency Range</b>	6-100Hz, works on VFDs			
<b>Sensing Aperture</b>	0.85" (21.5mm) sq.			
<b>Case</b>	UL 94V-0 Flammability rated			
<b>Environmental</b>	-58 to 149° F (-50 to 65° C), 0-95% RH, non-condensing			

**HOW TO ORDER**

**ACS-**

RANGE

- 200 – 1.5 TO 6A
- 6 TO 40A
- 40 TO 200A

OUTPUT

- CAJ – NORMALLY CLOSED
- OAJ – NORMALLY OPEN

RANGE SELECTABLE

- YES
- YES

<b>AAC</b>	<b>Drawing Number 700-ACS-3</b>	<b>Rev. C</b>
------------	-------------------------------------	-------------------