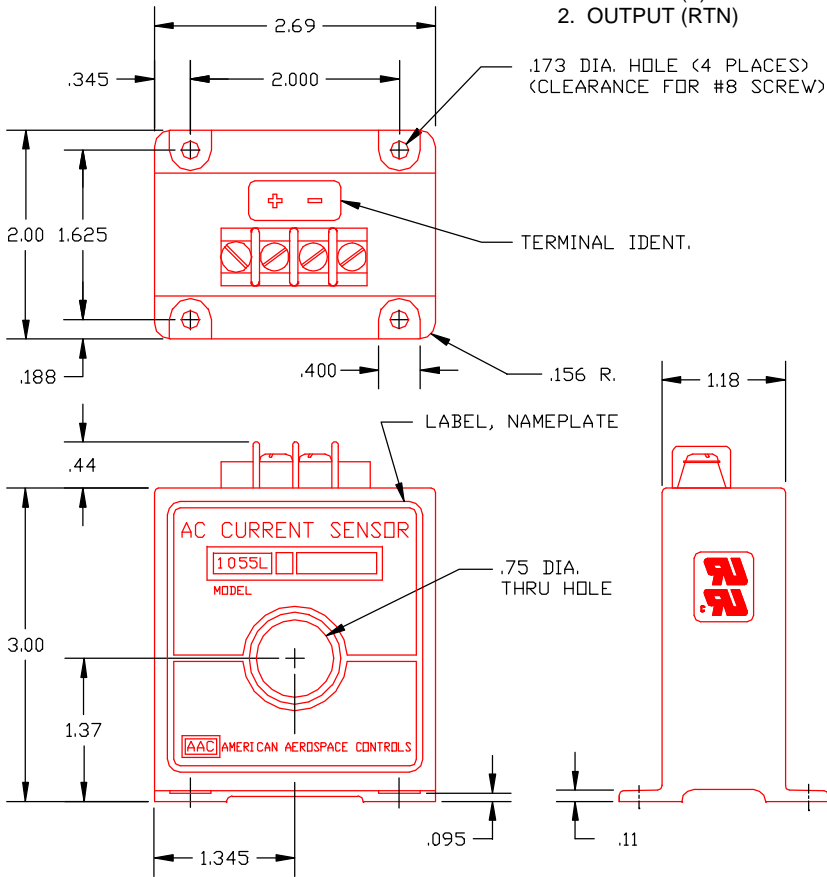


Dimensions in Inches, Tolerances: .XX ± .03 .XXX ± .010

**TERMINAL IDENTIFICATION**

- 1. OUTPUT (+)
- 2. OUTPUT (RTN)



**AC CURRENT TRANSDUCER  
MODEL 1055L  
4 TO 20mA 2 WIRE LOOP OPERATION**

PART NO.	INPUT RANGE	PART NO.	INPUT RANGE
1055L-50.....	0 to 50mA	1055L-250 .....	0 to 250mA
1055L-100.....	0 to 100mA	1055L-500 .....	0 to 500mA
1055L-200.....	0 to 200mA	1055L-1A.....	0 to 1A

**INPUT**

RANGE.....	Aac See Table
FREQUENCY.....	50 to 60 Hz
OVERLOAD CONTINUOUS .....	250Aac
OVERLOAD TRANSIENT .....	100 Times Range For 250m-sec.

**OUTPUT**

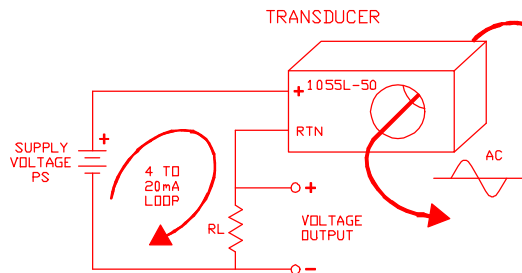
CURRENT SIGNAL .....	4 to 20mAac FS (Full Scale)
ACCURACY .....	±0.5% FS or ±0.1mA max. (Over Temperature Range)
RIPPLE .....	±0.25% FS (±0.05 mA RMS)
RESPONSE (10 to 90%).....	100mS max.
LOAD RESISTANCE (RL) .....	250 Ohms Nominal
LOAD RESISTANCE RANGE .....	0 to 1400 Ohms (See Note)
CURRENT SIGNAL @ OVERLOAD .....	30mA TYP.
PROTECTION .....	Reverse Polarity Protected

**POWER SUPPLY (PS)**

SUPPLY VOLTAGE .....	15Vdc Nominal
CURRENT DRAIN .....	20mA
SUPPLY VOLTAGE RANGE.....	7 to 35Vdc

**ENVIRONMENTAL AND PHYSICAL CHARACTERISTICS**

OPERATING TEMPERATURE RANGE .....	-20° to +85°C
STORAGE TEMPERATURE RANGE.....	-40° to +85°C
ISOLATION .....	Input/Output/Case
INSULATION RESISTANCE .....	200 M-Ohms @ 500Vdc
INPUT CONDUCTOR VOLTAGE .....	1.5KV max. (5KV max. with insulated cable)
WEIGHT .....	10 oz. Max.



**NOTE:**

MINIMUM DC SUPPLY VOLTAGE = 7V + .02 (RL)  
RL = ANY VALUE BETWEEN 0 AND 1400 OHMS.

**TERMINAL SCREWS:**

5-40 SCREWS, 3/8" CENTER TO CENTER  
SPACING ACCEPTS WIRE SIZES UP TO  
14 AWG. AND WIRE LUGS UP TO 9/32  
WIDE.



UL RECOGNIZED



CSA RECOGNIZED

**AAC**

**Drawing Number  
700-1055L**

**Rev.  
C**